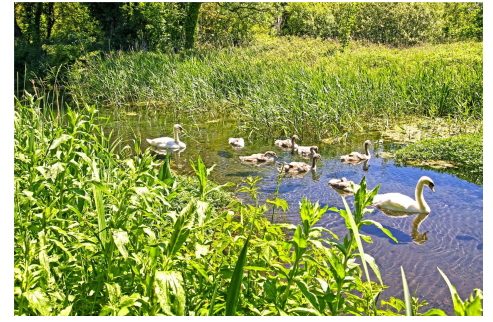
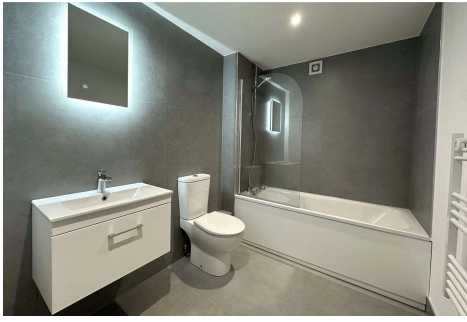


One Bedroom Apartment

London Road, Old Basing, Basingstoke, Hampshire, RG24 7JL

Price: £240,000

- One Bedroom Apartment
- Share of Freehold
- Integrated Appliances
- Bathroom Complete with Touch Sensitive Mirror Light
- Quality Internal Doors with Brushed Metal Furniture
- One Allocated Parking Space
- On Site Electric Charging
- EPC: TBC



Description

Situated on the edge of Old Basing and overlooking the river Lyde is this collection of 17 high specification apartments built by local developer 4DS Construction.

This apartment has an open plan living/dining room with a fitted kitchen with integrated NEFF appliances to include hide and slide oven, four ring induction hob, fridge/freezer, dishwasher and washer/dryer, principal bedroom, study and family bathroom.

Offering excellent transport links with the M3 and Basingstoke railway station (services to London in 50 minutes) being under a ten-minute drive away. The apartments are a short walk from Old Basing village centre and its bakery, coffee shop, Co-Op store, health centre/pharmacy and post office.

Festival Place offers shops, bars and restaurants and the town has extensive recreational facilities including sports centres, cinemas, museums, theatres and ten pin bowling.

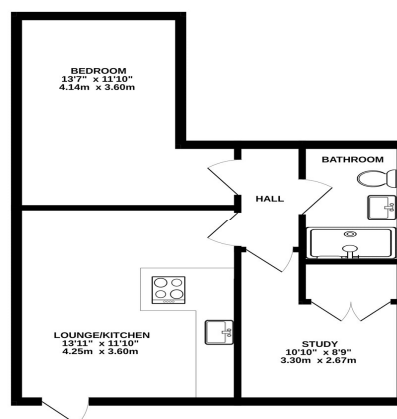
Plots 1, 3, 4, 6, 7, 8, 13, 14, 15 all have solar which provide 1.5 kwph.

Outside

The apartment comes with one allocated parking space and on site electric charging.

Floorplan

GROUND FLOOR
515 sq.ft. (47.8 sq.m.) approx.



TOTAL FLOOR AREA: 515 sq.ft. (47.8 sq.m.) approx.
While every effort has been made to ensure the accuracy of the floorplan, the developer does not accept any liability for any discrepancy between the floorplan and the actual property. The floorplan is for information only and should not be used as a basis for any purchase or rental agreement. The floorplan is not a contract and should be read in conjunction with the sales or rental agreement.



TO ARRANGE A VIEWING PLEASE CONTACT:
Tel: **01256 769999** or Email: **info@bridges.co.uk**



Important Notice - These particulars are set out as a general outline only for the guidance of intended purchasers/tenants and do not form part of any offer or contract and must not be relied upon as statements or representations of fact. Purchasers/Tenants must satisfy themselves by inspection or otherwise as to their correctness.