



Three Bedroom End of Terrace House

Frimley Green Road, Frimley Green, Camberley, Surrey, GU16 6LL

Price: £425,000

- Three Bedroom
- Town House
- Two Fitted Family Bathrooms
- Downstairs Toilet
- Walk-in Wardrobe
- 17ft Living/Dining Area
- Two Designated Parking Bays
- EPC: C (74)



Description

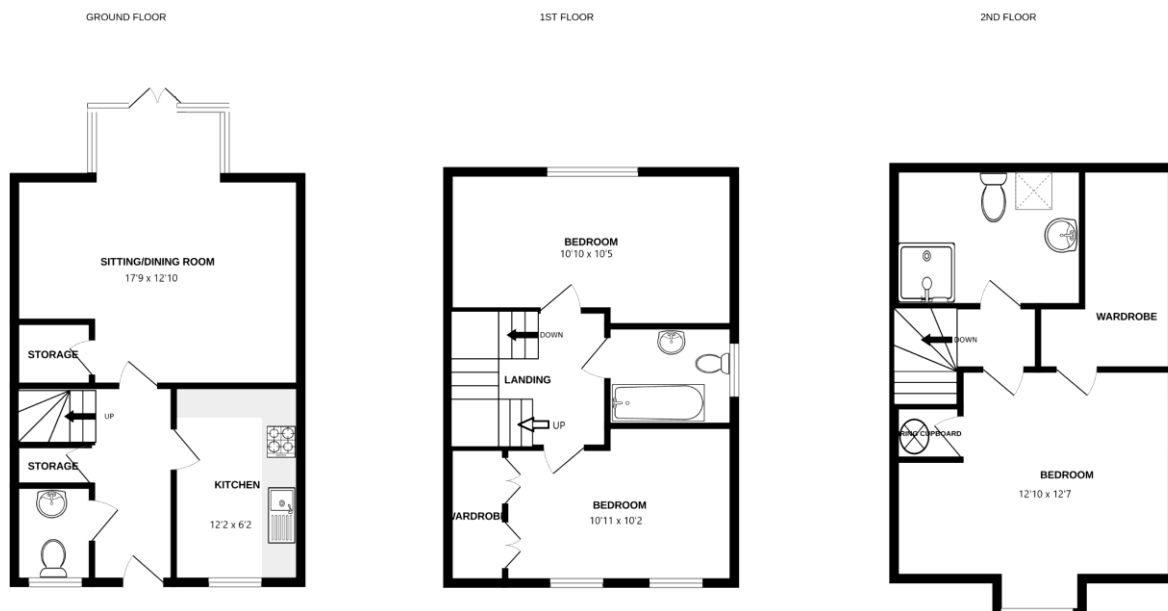
Easy access to Frimley High Street, local schools, shops and travel links is this well presented town house that offers a 17ft living and dining area with access to the garden, fitted kitchen, downstairs bathroom, spacious family bathroom and three generous sized bedrooms including a 12ft double bedroom with a walk-in wardrobe and fitted bathroom on the second floor. Perfect for first time buyers and ideal family home.

Outside

Outside, there is a front patio area, while the good sized rear garden includes a lawn, patio, shed and rear gate leading to two designated parking bays. Easy access to local schools, shops, parks, Frimley High Street and great travel links.

To view the Material Information Certificate for this property please click [Here](#) or contact us to request a copy

Floorplan



Whilst every attempt has been made to ensure the accuracy of the floorplan contained here, measurements of doors, windows, rooms and any other items are approximate and no responsibility is taken for any error, omission or mis-statement. This plan is for illustrative purposes only and should be used as such by any prospective purchaser. The services, systems and appliances shown have not been tested and no guarantee as to their operability or efficiency can be given.
Made with Metropix ©2025



TO ARRANGE A VIEWING PLEASE CONTACT:
Tel: **01252 361550** or Email: **info@bridges.co.uk**



Important Notice - These particulars are set out as a general outline only for the guidance of intended purchasers/tenants and do not form part of any offer or contract and must not be relied upon as statements or representations of fact. Purchasers/Tenants must satisfy themselves by inspection or otherwise as to their correctness.