

## Two Bedroom Apartment

**Observer Point Road, Overton, Basingstoke, Hampshire, RG25 3FA**

Price: £225,000

- Two Bedrooms
- Top Floor Apartment
- Allocated Parking
- Country Views
- Close to Shops and Train Station
- No Onward Chain
- Gas Central Heating
- EPC: B (83)



## Description

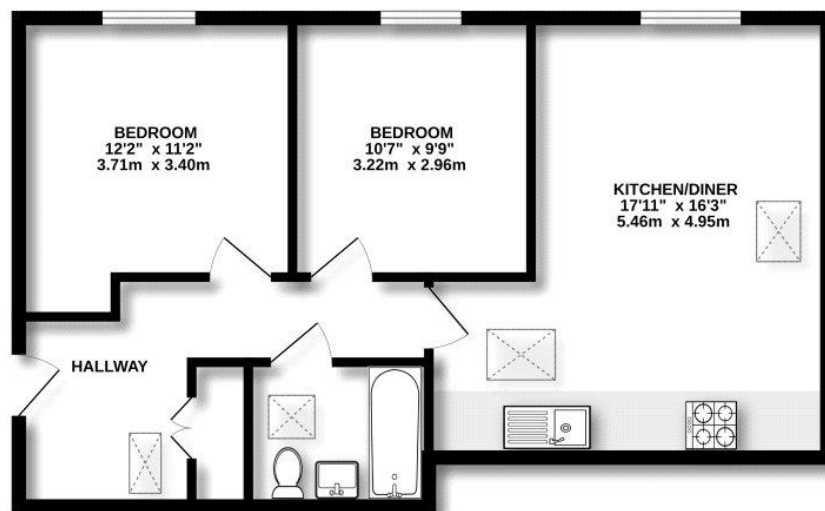
This well presented two bedroom top floor apartment is situated on the edge of Overton and benefits from lovely country views. The property features an open plan lounge/kitchen, two bedrooms and a family bathroom. Offered with no onward chain.

## Outside

The development features secure entry access and a car park with both allocated and visitor parking. A well maintained play park is located directly opposite, making it ideal for families.

To view the Material Information Certificate for this property please click [Here](#) or contact us to request a copy

## Floorplan



Measurements are approximate. Not to scale. Illustrative purposes only.  
Made with Metropix ©2025



**TO ARRANGE A VIEWING PLEASE CONTACT:**  
Tel: **01256 880001** or Email: **info@bridges.co.uk**



Important Notice - These particulars are set out as a general outline only for the guidance of intended purchasers/tenants and do not form part of any offer or contract and must not be relied upon as statements or representations of fact. Purchasers/Tenants must satisfy themselves by inspection or otherwise as to their correctness.