



Four Bedroom Detached Bungalow

Westwood Lane, Normandy, Surrey, GU3 2JE

Guide Price: £870,000

- Four Double Bedrooms
- Detached Bungalow
- Plot of Approximately 0.35 Acres
- Semi-Rural Setting
- South Westerly Facing Rear Garden
- Driveway and Double Garage
- Potential to Extend STPP
- EPC: E (49)



Description

A wonderful four bedroom detached bungalow set on a generous south westerly plot backing onto equestrian paddocks in the charming semi rural village of Normandy. The property offers two spacious reception rooms, a modern kitchen, separate utility room, and a main bedroom with a contemporary en suite, plus three further double bedrooms and a modern family bathroom. An integral double garage with electric doors adds further appeal.

Outside, the wraparound plot provides a frontage with parking for multiple vehicles and a sunny landscaped rear garden. The home is positioned on one of the village's most sought after roads, west of Guildford and close to the Hogs Back. Wanborough station and Wyke Infant School are within walking distance, with Ash Ranges nearby offering acres of open heathland.

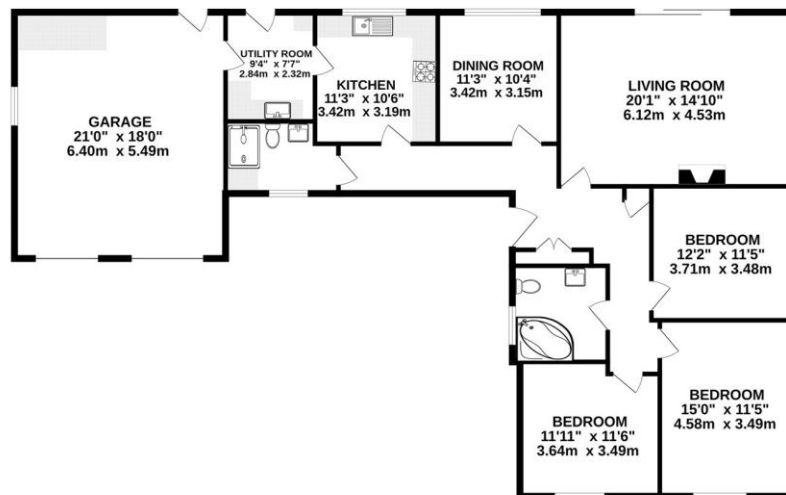
Outside

Set behind wooden gates, this property sits on a generous 0.35 acre plot of beautifully maintained wraparound gardens, offering a real sense of space and tranquillity. The frontage features a sweeping gravel driveway with parking for multiple vehicles and well kept lawns on either side.

The rear enjoys a landscaped south westerly garden backing onto an equestrian facility, providing excellent sunlight throughout the day. A raised decked area offers the perfect spot to unwind in the evening. Mature borders with a wide variety of plants, trees, and shrubs complete the setting, all fully enclosed by well maintained fencing.

Floorplan

GROUND FLOOR



Whilst every attempt has been made to ensure the accuracy of the floorplan contained here, measurements of doors, windows, rooms and any other items are approximate and no responsibility is taken for any error, omission or mis-statement. This plan is for illustrative purposes only and should be used as such by any prospective purchaser. The services, systems and appliances shown have not been tested and no guarantee as to their operability or efficiency can be given.
Made with Metropics ©2023



TO ARRANGE A VIEWING PLEASE CONTACT:
Tel: **01252 361550** or Email: **info@bridges.co.uk**



Important Notice - These particulars are set out as a general outline only for the guidance of intended purchasers/tenants and do not form part of any offer or contract and must not be relied upon as statements or representations of fact. Purchasers/Tenants must satisfy themselves by inspection or otherwise as to their correctness.