



## Two Bedroom Apartment

**Upper Park Road, Camberley, Surrey, GU15 2EG**

Guide Price: £260,000

- Two Double Bedrooms
- First Floor
- Character Apartment
- Wealth of Character Features
- Communal Gardens
- Residents Parking
- No Onward Chain
- EPC: D (67)





## Description

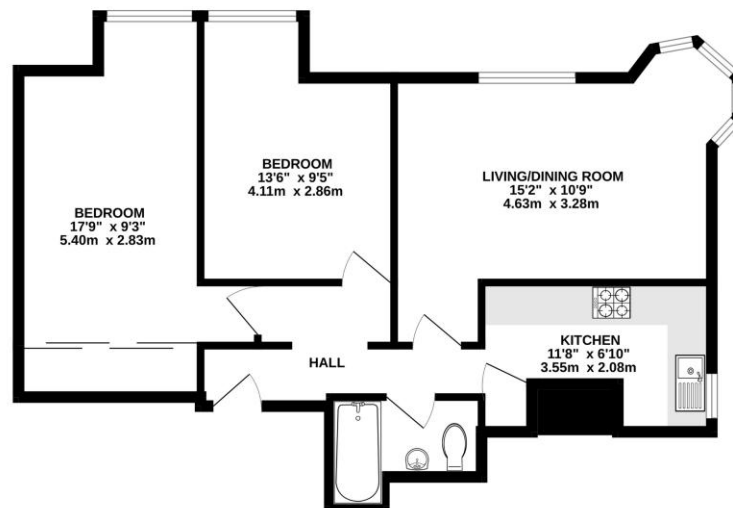
A charming first floor two bedroom period conversion apartment located in a sought after location within walking distance of Camberley town centre. The property also benefits from communal gardens and residents parking. The accommodation comprises of a living/dining room, separate kitchen, two spacious double bedrooms and a family bathroom as well as a wealth of character features. An internal inspection is highly recommended to truly appreciate all that this property has to offer.

## Outside

Externally the property benefits from communal gardens as well as residents parking.

## Floorplan

FIRST FLOOR



Whilst every attempt has been made to ensure the accuracy of the floorplan contained herein, measurements of doors, windows, rooms and any other items are approximate and no responsibility is taken for any error, omission or mis-statement. This plan is for illustrative purposes only and should be used as such by any prospective purchaser. The services, systems and appliances shown have not been tested and no guarantee as to their operability or efficiency can be given.  
Made with Metropix C3002.



TO ARRANGE A VIEWING PLEASE CONTACT:

Tel: **01276 685544** or Email:

**[camberley@bridges.co.uk](mailto:camberley@bridges.co.uk)**



Important Notice - These particulars are set out as a general outline only for the guidance of intended purchasers/tenants and do not form part of any offer or contract and must not be relied upon as statements or representations of fact. Purchasers/Tenants must satisfy themselves by inspection or otherwise as to their correctness.