



## Four Bedroom Semi-Detached House

**Coleford Bridge Road, Mytchett, Camberley, Surrey, GU16 6DS**

Guide Price: £585,000

- Four bedrooms
- Semi-Detached Family Home
- Extended Living Room with Feature Fireplace
- Fitted Kitchen/Dining Area
- Generous Driveway Parking and Garage
- Newly Re-Fitted Modern Family Bathroom
- Spacious Loft Conversion
- EPC: TBC





## Description

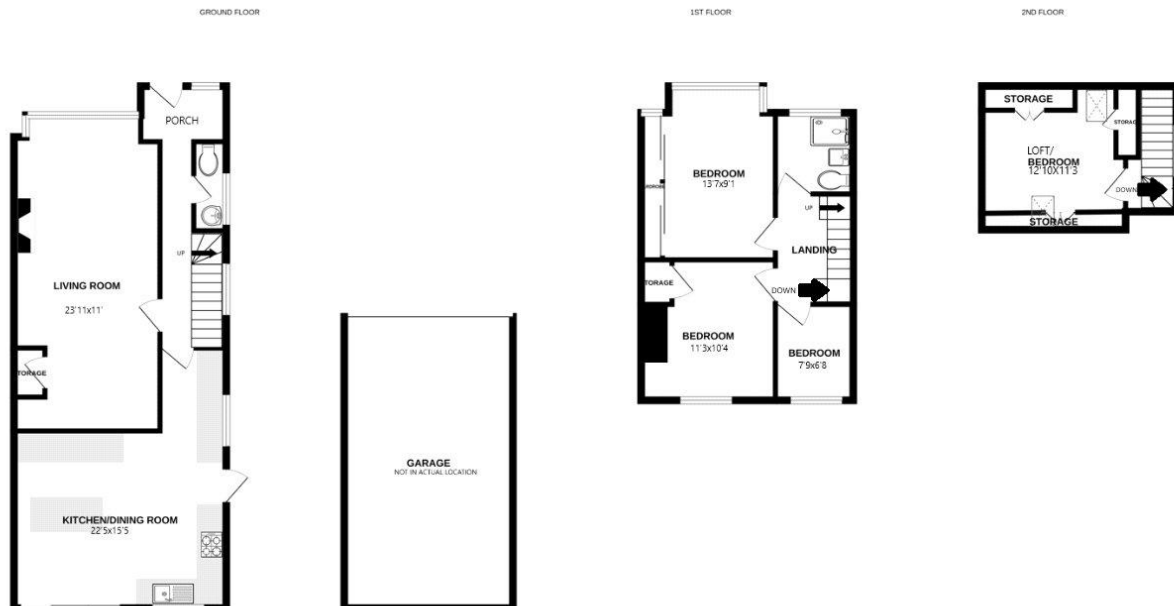
With easy access to local schools, shops and parks, this impressive four bedroom detached family home features an extended 23ft living area with a feature fireplace, a refitted 22ft kitchen/diner, and a downstairs toilet. The first floor offers three bedrooms, including a 13ft main bedroom with a built-in wardrobe, along with a modern, newly fitted family bathroom. The loft has been converted into a generously sized bedroom with built-in storage. An ideal family home.

## Outside

Situated in a sought after area, this beautiful family home offers a scenic view of Mytchett lake from the 140ft rear garden, it also includes a great sized shed, rear access, garage and a driveway with excellent frontage.

To view the Material Information Certificate for this property please click [Here](#) or contact us to request a copy.

## Floorplan



Whilst every attempt has been made to ensure the accuracy of the floorplan contained here, measurements of doors, windows, rooms and any other items are approximate and no responsibility is taken for any error, omission or mis-statement. This plan is for illustrative purposes only and should be used as such by any prospective purchaser. The services, systems and appliances shown have not been tested and no guarantee as to their operability or efficiency can be given.  
Made with Letwiner 2020C



**TO ARRANGE A VIEWING PLEASE CONTACT:**  
Tel: **01252 361550** or Email: **info@bridges.co.uk**



**Important Notice - These particulars are set out as a general outline only for the guidance of intended purchasers/tenants and do not form part of any offer or contract and must not be relied upon as statements or representations of fact. Purchasers/Tenants must satisfy themselves by inspection or otherwise as to their correctness.**