



Two Bedroom Apartment

Lorraine Road, Camberley, Surrey, GU15 4EF

Price: £230,000

- Two Double Bedrooms
- First Floor Apartment
- Gas Central Heating Via Radiators
- Kitchen
- Allocated Parking Space
- Communal Gardens and Shed
- Easy Access to A30/M3
- EPC: C (76)



Description

A well-presented and spacious first floor apartment featuring two double bedrooms, set in a quiet cul-de-sac within easy reach of Camberley town centre and excellent commuter links. The accommodation includes a dual aspect living room, a well sized kitchen/breakfast room, two double bedrooms with fitted wardrobes, and a bathroom.

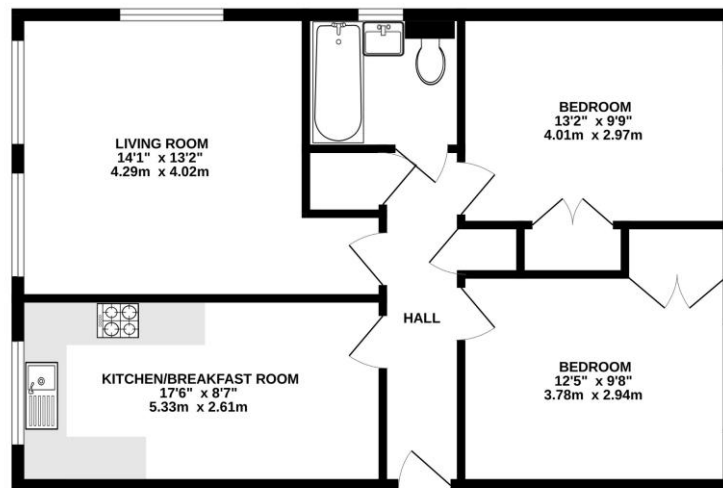
Outside

Externally, the property benefits from communal garden space to the rear, a private storage shed, and one allocated parking space to the front of the block.

To view the Material Information Certificate for this property please click [Here](#) or contact us to request a copy.

Floorplan

FIRST FLOOR



Whilst every attempt has been made to ensure the accuracy of the floorplan contained here, measurements of rooms, sections, rooms and any other items are approximate and no responsibility is taken for any error, omission or mis-statement. This plan is for illustrative purposes only and should be used as such by any prospective purchaser. The services, systems and appliances shown have not been tested and no guarantee as to their operability or efficiency can be given.
Made with Metropac ©2023



TO ARRANGE A VIEWING PLEASE CONTACT:

Tel: **01276 685544** or Email:

camberley@bridges.co.uk



Important Notice - These particulars are set out as a general outline only for the guidance of intended purchasers/tenants and do not form part of any offer or contract and must not be relied upon as statements or representations of fact. Purchasers/Tenants must satisfy themselves by inspection or otherwise as to their correctness.