

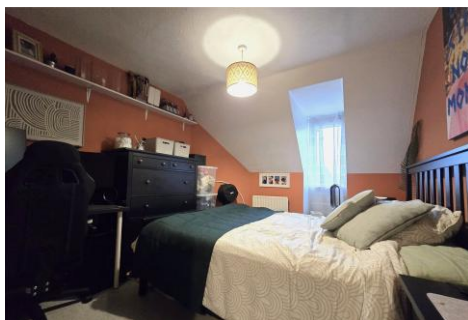


Two Bedroom Apartment

New Poplars Court, Ash Street, Ash, Surrey, GU12 6LH

Price: £240,000

- Two Double Bedrooms
- Long lease
- Close to Local amenities
- Great Condition Throughout
- Walking Distance to Ash Train Station
- Refitted Bathroom
- Refitted Kitchen
- EPC: TBC



Description

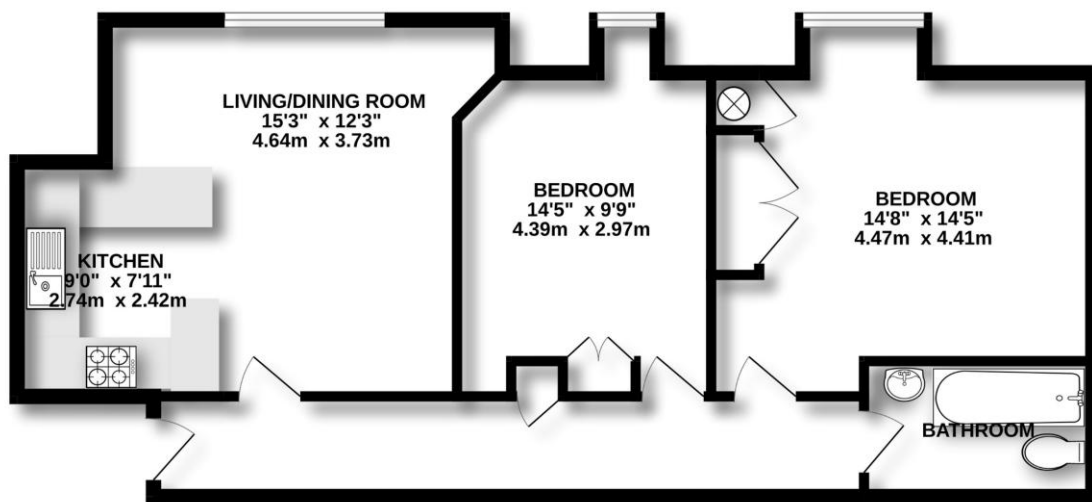
Located within close walking distance to Ash train station and the local amenities is this spacious two double bedroom apartment with plenty of years remaining on the lease. The property boasts two double bedrooms, both with built-in wardrobes, a kitchen with plenty of cupboard/worktop space, a generously sized living room/dining room and a family bathroom. The block is in great order throughout and offers plenty of residents parking. The property must be viewed, so do be in touch with us today to book your appointment!

Outside

Outside there are plenty of residents parking spaces, plus lovely communal grounds which wrap around the whole block. To view the Material Information Certificate for this property please click [Here](#) or contact us to request a copy.

Floorplan

SECOND FLOOR



Measurements are approximate. Not to scale. Illustrative purposes only
Made with Metropix ©2026



TO ARRANGE A VIEWING PLEASE CONTACT:
Tel: **01252 361550** or Email: **info@bridges.co.uk**



Important Notice - These particulars are set out as a general outline only for the guidance of intended purchasers/tenants and do not form part of any offer or contract and must not be relied upon as statements or representations of fact. Purchasers/Tenants must satisfy themselves by inspection or otherwise as to their correctness.