



Three Bedroom Semi-Detached House

Knightwood Close, Farnborough, Hampshire, GU14 6HS

Guide Price: £495,000

- Three Double Bedrooms
- Kitchen with Integrated Appliances
- Cloakroom
- Ensuite to Bedroom One
- Walk in Wardrobe Area
- Allocated Parking
- Recently Replaced Gas Boiler
- EPC: C (76)



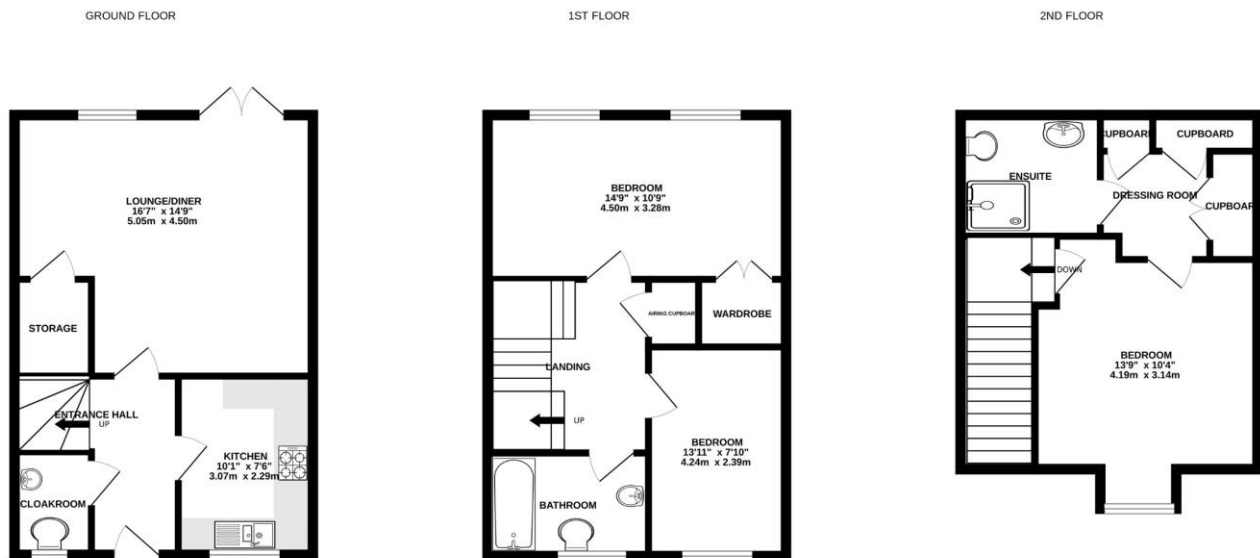
Description

This modern three double bedroom town house occupies a cul-de-sac location and is situated on the fringes of Farnborough park and within close proximity to North Camp Village and the popular King George V playing fields. The accommodation comprises a front aspect kitchen, ground floor cloakroom and a rear aspect living/dining room with doors leading to the enclosed rear garden. On the first floor there are two double bedrooms and a family bathroom. To the second floor there is the principal bedroom with en suite shower room and walk in wardrobe area.

Outside

To the rear of the property there is an enclosed rear garden with an area of paved patio leading to the lawned area. There is also a rear access pedestrian gate which opens onto the car parking area to the rear of the property. The property benefits from two allocated parking spaces.

Floorplan



Whilst every attempt has been made to ensure the accuracy of the floorplan contained here, measurements of doors, windows, rooms and any other items are approximate and no responsibility is taken for any error, omission or mis-statement. This plan is for illustrative purposes only and should be used as such by any prospective purchaser. The services, systems and appliances shown have not been tested and no guarantee as to their operability or efficiency can be given.

Made with Metropix ©2025



TO ARRANGE A VIEWING PLEASE CONTACT:
Tel: **01252 361550** or Email: **info@bridges.co.uk**



Important Notice - These particulars are set out as a general outline only for the guidance of intended purchasers/tenants and do not form part of any offer or contract and must not be relied upon as statements or representations of fact. Purchasers/Tenants must satisfy themselves by inspection or otherwise as to their correctness.