



## Three Bedroom Semi-Detached House Green Way, Aldershot, Hampshire, GU12 4XA

Guide Price: £390,000

- Three Bedroom Family Home
- Driveway Parking and a Garage
- Must Be Seen to be Fully Appreciated
- Presented in Good Order Throughout
- Cul-de-Sac Location
- Picturesque Walks in Close Proximity
- Landscaped, Secluded Rear Garden
- EPC: C (72)





## Description

A semi-detached family home, well positioned and set over two floors, with internal accommodation presented in good order throughout. The property benefits from three bedrooms, open plan reception rooms, driveway parking, and a garage.

The ground floor boasts a welcoming entrance hall leading to either the main lounge or a high gloss fitted kitchen. Upstairs, the first floor offers a principal bedroom, two further bedrooms, and a family bathroom.

This home provides versatile family living with a contemporary and modern finish. It has been the subject of numerous improvements by the current owners, which are evident throughout. Additional benefits include a secluded, established, and idyllic garden, as well as driveway parking and a garage.

Located just 1.7 miles from the train station with direct links to London Waterloo this exceptional family home is also within walking distance of popular schools and Rowhill Nature Reserve.

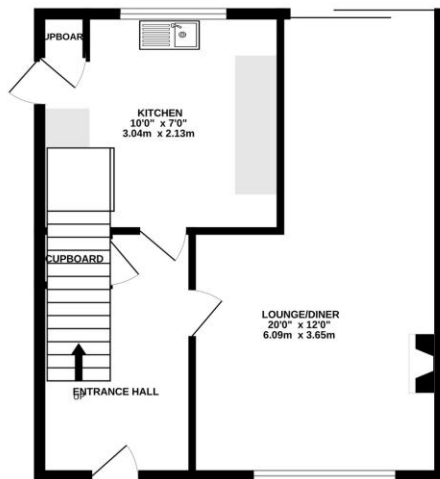
## Outside

Positioned on a generous plot, the property features a front driveway and a garage. To the rear, it offers an attractive garden incorporating an area of artificial lawn and a patio perfect for entertaining enclosed by wooden fencing. The garden provides a good degree of privacy and seclusion.

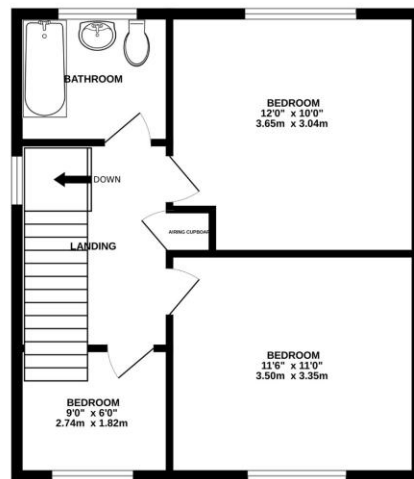
To view the Material Information Certificate for this property please click [Here](#) or contact us to request a copy.

## Floorplan

GROUND FLOOR



1ST FLOOR



Whilst every attempt has been made to ensure the accuracy of the floorplan contained here, measurements of doors, windows, rooms and any other items are approximate and no responsibility is taken for any error, omission or mis-statement. This plan is for illustrative purposes only and should be used as such by any prospective purchaser. The services, systems and appliances shown have not been tested and no guarantee as to their operability or efficiency can be given.  
Made with Metropix ©2025



**TO ARRANGE A VIEWING PLEASE CONTACT:**  
Tel: **01252 361550** or Email: **info@bridges.co.uk**



**Important Notice - These particulars are set out as a general outline only for the guidance of intended purchasers/tenants and do not form part of any offer or contract and must not be relied upon as statements or representations of fact. Purchasers/Tenants must satisfy themselves by inspection or otherwise as to their correctness.**