



Three Bedroom Semi-Detached House

Paice Gardens, Basingstoke, Hampshire, RG24 9NX

Guide Price: £375,000

- Three Bedrooms
- Loft Conversion
- Open Plan Living
- Modern Kitchen
- Garden Office
- Allocated Parking
- Well Presented Throughout
- EPC: B (83)



Description

Bridges are pleased to present this well maintained three bedroom semi-detached home, ideally located in the popular Spiers Meadow development. The ground floor features a bright, spacious open plan living area with a modern kitchen, a spacious under stairs storage cupboard, rear access to the garden and a downstairs cloakroom.

Upstairs offers two well proportioned bedrooms and a modern family bathroom, while a recent loft conversion provides a generous principal bedroom with storage.

Presented in excellent condition throughout, this home is ideal for first time buyers, families or downsizers.

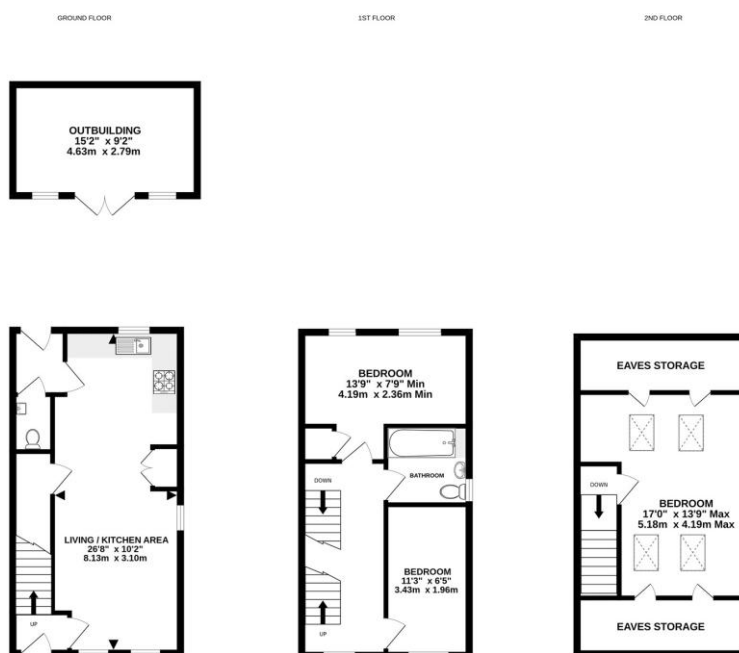
Outside

Externally, the property offers two allocated parking spaces to the front and a fully enclosed rear garden with an artificial lawn and decked patio, ideal for outdoor entertaining. A standout feature is the spacious summer house, currently used as a home office and fully insulated with power, lighting, double doors and garden views. The garden also benefits from a rear gate providing convenient access via a neighbouring pathway.

Spiers Meadow is conveniently located north of Basingstoke town centre, offering a wide range of shopping and leisure facilities, excellent transport links including a mainline railway station with services to London Waterloo in approximately 47 minutes, and easy access to the M3 motorway. Local amenities, schools and bus links are also close by.

To view the Material Information Certificate for this property please click [Here](#) or contact us to request a copy

Floorplan



Whilst every attempt has been made to ensure the accuracy of the floorplan contained herein, measurements of doors, windows, rooms and any other items are approximate and no responsibility is taken for any error, omission or mis-statement. This plan is for illustrative purposes only and should be used as such by any prospective purchaser. The services, systems and appliances shown have not been tested and no guarantee as to their operability or efficiency can be given.
Made with Metreplan C2000



TO ARRANGE A VIEWING PLEASE CONTACT:
Tel: **01256 880001** or Email: **info@bridges.co.uk**



Important Notice - These particulars are set out as a general outline only for the guidance of intended purchasers/tenants and do not form part of any offer or contract and must not be relied upon as statements or representations of fact. Purchasers/Tenants must satisfy themselves by inspection or otherwise as to their correctness.