



## Three Bedroom Detached House

**Cleeve Road, Basingstoke, Hampshire, RG24 9RZ**

Price: £435,000

- Three Bedrooms
- Detached
- Garage
- Driveway
- EV Charging Point
- Hot Tub
- No Onward Chain
- EPC: B (83)



## Description

Offered to the market with no chain is this three bedroom detached house located in Spiers Meadow. The property has a downstairs cloakroom, spacious kitchen/diner and lounge across the rear. Upstairs there is bedroom one with an en suite, two further bedrooms and a family bathroom.

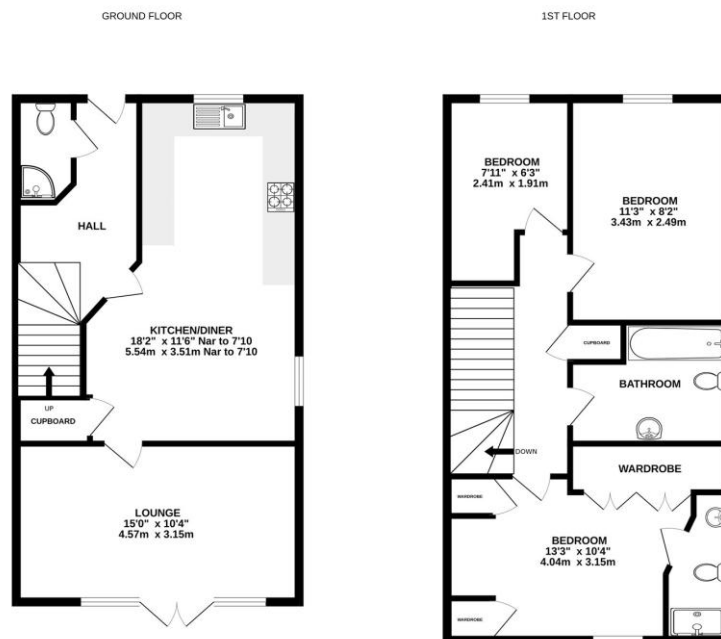
## Outside

Outside to the front there is a small flower bed, driveway to the side for multiple cars and access to the garage with up and over door with power and light and a gate into the rear garden.

To the rear there is a low maintenance garden with artificial grass and patio, a gazebo with a hot tub (included in sale).

To view the Material Information Certificate for this property please click [Here](#) or contact us to request a copy

## Floorplan



Whilst every attempt has been made to ensure the accuracy of the floorplan contained herein, measurements of floors, windows, doors and any other details are approximate and no responsibility is taken for any error, omission or mis-statement. This plan is for illustrative purposes only and should be used as such by any prospective purchaser. The services, systems and appliances shown have not been tested and no guarantee as to their operability or efficiency can be given. Made with Metropac CDDG



TO ARRANGE A VIEWING PLEASE CONTACT:  
Tel: **01256 880001** or Email: **info@bridges.co.uk**



Important Notice - These particulars are set out as a general outline only for the guidance of intended purchasers/tenants and do not form part of any offer or contract and must not be relied upon as statements or representations of fact. Purchasers/Tenants must satisfy themselves by inspection or otherwise as to their correctness.