



Two Bedroom End of Terrace House

St Pauls Close, Tongham, Surrey, GU10 1EN

Price: £390,000

- Two Bedrooms
- Semi-Detached House
- Quiet Cul-de-Sac
- Conservatory
- Well Presented
- Driveway
- Rear Garden
- EPC: C (69)



Description

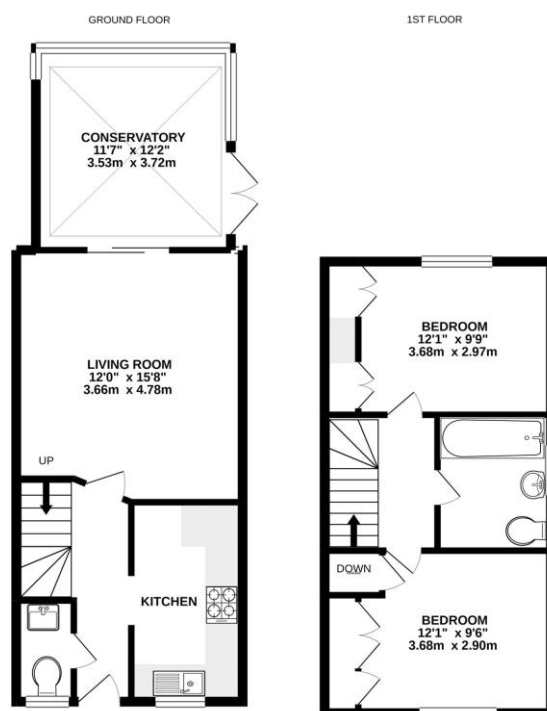
An immaculate two double bedroom semi-detached house, situated within a popular and quiet cul-de-sac in Tongham village. Downstairs boasts a living room and a generously sized conservatory with double doors leading into the garden. There is also a fitted kitchen and a cloakroom. Upstairs benefits from two double bedrooms, both with built-in wardrobes, and a fitted three piece bathroom suite. Further benefits include the opportunity to extend, subject to planning, with previous planning in place for a side extension.

Outside

Outside boasts a well maintained private garden and a patio area ideal for alfresco dining and entertaining. There is also parking for multiple vehicles.

To view the Material Information Certificate for this property please click [Here](#) or contact us to request a copy.

Floorplan



Whilst every attempt has been made to ensure the accuracy of the floorplan contained here, measurements of doors, windows, rooms and any other items are approximate and no responsibility is taken for any error, omission or misstatement. This plan is for illustrative purposes only and should be used as such by any prospective purchaser. The services, systems and appliances shown here have not been tested and no guarantee as to their operability or efficiency can be given.
Made with NetSpace 11/2021



TO ARRANGE A VIEWING PLEASE CONTACT:
Tel: **01252 361550** or Email: **info@bridges.co.uk**



Important Notice - These particulars are set out as a general outline only for the guidance of intended purchasers/tenants and do not form part of any offer or contract and must not be relied upon as statements or representations of fact. Purchasers/Tenants must satisfy themselves by inspection or otherwise as to their correctness.