

## Three Bedroom Semi-Detached House

**Ash Hill Road, Ash, Surrey, GU12 6AA**

**Price: £375,000**

- Three bedrooms
- Semi-Detached Home
- Driveway Parking
- Close to Ash Train Station
- Refitted Boiler
- Kitchen
- Front and Rear Garden
- EPC: TBC





## Description

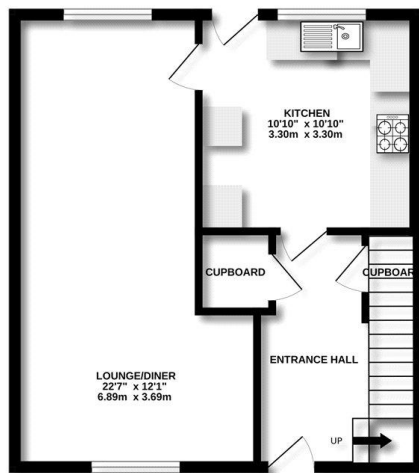
This tucked away three bedroom semi-detached home is offered to the market with a refitted boiler and presents the perfect opportunity for someone looking to add their own stamp. The ground floor features a spacious hallway with storage, a refitted kitchen, and a large living/dining room. Upstairs, there are three well proportioned bedrooms, a bathroom, and a separate cloakroom.

## Outside

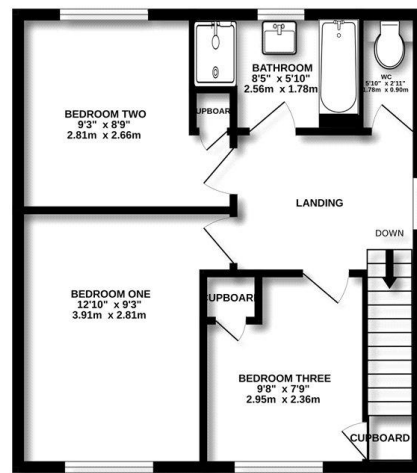
To the front, the property enjoys a garden with side access to the rear. The rear garden is laid entirely to decking, providing ample space for entertaining, complemented by the convenience of driveway parking.

## Floorplan

GROUND FLOOR



1ST FLOOR



Measurements are approximate. Not to scale. Illustrative purposes only.  
Made with Metropix ©2025



TO ARRANGE A VIEWING PLEASE CONTACT:  
Tel: **01252 361550** or Email: **info@bridges.co.uk**



Important Notice - These particulars are set out as a general outline only for the guidance of intended purchasers/tenants and do not form part of any offer or contract and must not be relied upon as statements or representations of fact. Purchasers/Tenants must satisfy themselves by inspection or otherwise as to their correctness.