

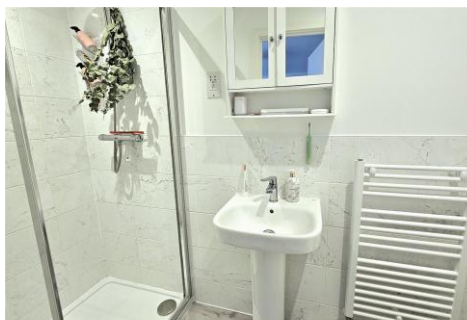


Two Bedroom Semi-Detached House

Withers Walk, Blackwater, Camberley, Hampshire, GU17 9FQ

Guide Price: £425,000

- Two Double Bedroom
- Semi-Detached House
- Recently Constructed
- Constructed by "Crest Nicholson"
- En Suite Shower Room and Bathroom
- Enclosed Rear Garden
- Two Allocated Parking Spaces
- EPC: B (83)



Description

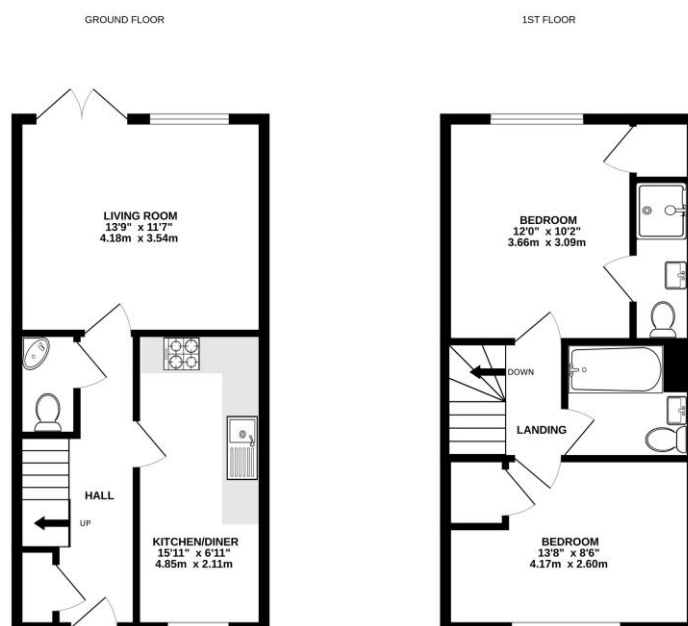
Recently constructed by "Crest Nicholson" is this charming two double bedroom semi-detached house located with a sought after location off Hawley Lane. The property benefits from two bathrooms as well as two allocated parking spaces. The accommodation comprises of a rear aspect living room, fitted kitchen/diner, and cloakroom all on the ground floor. To the first floor you have a principal bedroom with walking cupboard and en suite shower room, a further double bedroom and family bathroom.

Outside

Externally the property benefits from a private rear garden mainly laid to lawn with patio area and rear gated access. To the front you have landscaped front garden with steps up to the front door as well as two allocated parking spaces.

To view the Material Information Certificate for this property please click [Here](#) or contact us to request a copy.

Floorplan



Whilst every attempt has been made to ensure the accuracy of the floorplan contained herein, measurements of doors, windows, rooms and any other items are approximate and no responsibility is taken for any errors, omission or mis-statement. This plan is for illustrative purposes only and should be used as such by any prospective purchaser. The services, systems and appliances shown have not been tested and no guarantee as to their operability or efficiency can be given.
Made with Hoxpox CADD



TO ARRANGE A VIEWING PLEASE CONTACT:

Tel: 01276 685544 or Email:

camberley@bridges.co.uk



Important Notice - These particulars are set out as a general outline only for the guidance of intended purchasers/tenants and do not form part of any offer or contract and must not be relied upon as statements or representations of fact. Purchasers/Tenants must satisfy themselves by inspection or otherwise as to their correctness.