

## Three Bedroom Terraced House

**Warwick Road, Basingstoke, Hampshire, RG23 8EB**

Price: £350,000

- Three Bedrooms
- Garage with Electric Door
- Downstairs Cloakroom
- Refitted Kitchen
- Four Piece Bathroom
- New Carpets and Flooring
- Off Street Parking
- EPC: TBC



## Description

Offered to the market is this well presented three bedroom terraced home, ideally positioned in the popular area of Winklebury. The property has been extensively upgraded throughout, including a new composite front door, new French doors with toughened glass, a refitted kitchen with Bosch induction hob and wine cooler, upgraded insulation, Karndean flooring, new carpets, a new electrical consumer unit and a Worcester boiler still under warranty.

The ground floor features a spacious lounge, a modern kitchen/diner and a cloakroom/utility room. Upstairs, there are three well proportioned bedrooms and a stylish four piece family bathroom.

## Outside

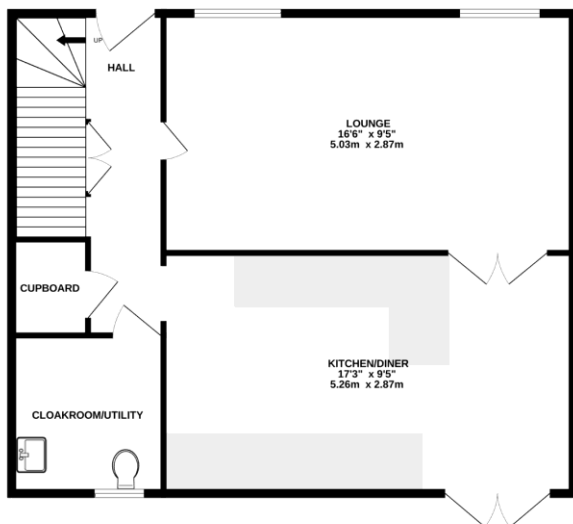
To the front, the property features an open plan garden with a pathway leading to the front door, complemented by a storm porch and a useful brick built storage cupboard.

The rear garden has been recently updated and includes a newly decked area, new boundary walls and fencing, and a lawned section ideal for outdoor enjoyment. Beyond the garden, there is off street parking and a garage equipped with an electric door, power and lighting.

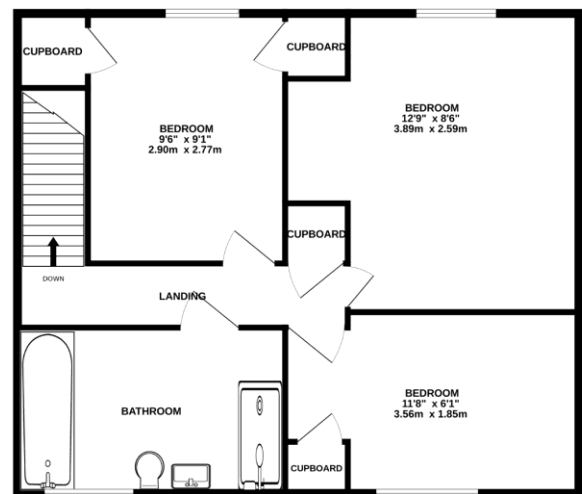
To view the Material Information Certificate for this property please click [Here](#) or contact us to request a copy.

## Floorplan

GROUND FLOOR



1ST FLOOR



Whilst every attempt has been made to ensure the accuracy of the floorplan contained here, measurements of doors, windows, rooms and any other items are approximate and no responsibility is taken for any error, omission or mis-statement. This plan is for illustrative purposes only and should be used as such by any prospective purchaser. The services, systems and appliances shown have not been tested and no guarantee as to their operability or efficiency can be given.  
Made with Metropix ©2025



**TO ARRANGE A VIEWING PLEASE CONTACT:**  
Tel: **01256 880001** or Email: **info@bridges.co.uk**



**Important Notice** - These particulars are set out as a general outline only for the guidance of intended purchasers/tenants and do not form part of any offer or contract and must not be relied upon as statements or representations of fact. Purchasers/Tenants must satisfy themselves by inspection or otherwise as to their correctness.