



WHITE LANE | ASH GREEN


**Platinum
Homes**
BY BRIDGES



The Property

Juniper House is a substantial home boasting over 8,000 square feet of accommodation. Individually designed, this detached family residence is situated on the edge of the Surrey Hills between Guildford and Farnham.

The generous ground floor accommodation includes a substantially sized dual aspect drawing room, dining room with an open bar area, study room, an additional playroom, and a sunroom which opens to the outside via full width bi-folding doors. In addition, there is a shelved library opening to the hallway and the stairway sits adjacent to the magnificent south facing kitchen/breakfast room.

The first floor hosts a luxurious principal suite, complete with a dressing room and a beautifully appointed four-piece en suite. In addition, there are four further generous double bedrooms and a well-appointed family bathroom, all accessed from the spacious landing. From here, a staircase rises to the versatile second floor, offering flexible accommodation that remains versatile for a number of uses.

Outside

The outstanding gardens have been well established over the last fifty years and boast an abundance of trees and shrubs; it is truly a space to be enjoyed when unwinding at the weekends

To the front there is an expansive driveway providing parking for numerous vehicles.





Features

- Eight Bedrooms
- Seven Reception Rooms
- High Specification
- Sky Terrace/Lookout
- Gated Driveway
- Double Garage
- No Onward Chain
- EPC: C (76)
- Council Tax Band: H

Contact

Philip Gascoyne

pgascoyne@platinumbybridges.co.uk

01252 975501


**Platinum
Homes**
BY BRIDGES



White Lane, Ash Green, Surrey, GU12

Approximate Area = 7102 sq ft / 659.7 sq m

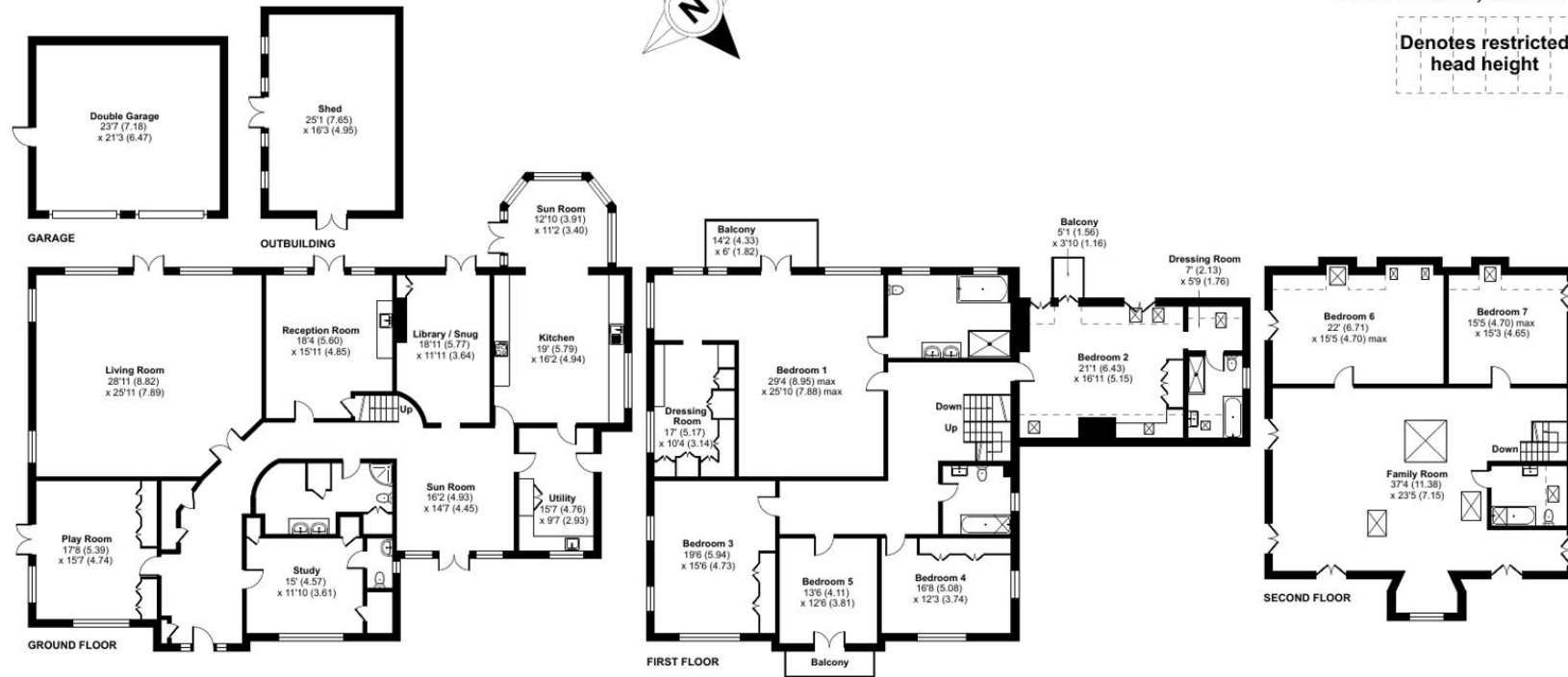
Limited Use Area(s) = 201 sq ft / 18.6 sq m

Garage = 500 sq ft / 46.4 sq m

Outbuilding = 408 sq ft / 37.9 sq m

Total = 8211 sq ft / 762.6 sq m

For identification only - Not to scale



Certified
Property
Measurer

Floor plan produced in accordance with RICS Property Measurement Standards incorporating International Property Measurement Standards (IPMS2 Residential). © nichecom 2024.
Produced for Bridges Estate Agents Ltd (Platinum Homes). REF: 1088477

**Platinum
Homes**
BY BRIDGES

Important Notice - These particulars are set out as a general outline only for the guidance of intended purchasers and do not form part of any offer or contract and must not be relied upon as statements or representations of fact. Purchasers must satisfy themselves by inspection or otherwise as to their correctness.

