



Three Bedroom End of Terrace House Abbey Road, Basingstoke, Hampshire, RG24 9EJ

Price: £300,000

- Three Bedrooms
- End-of-Terrace Home
- Kitchen/Dining Room
- Downstairs Cloakroom
- Gas Central Heating
- Garden
- No Onward Chain
- EPC: TBC



Description

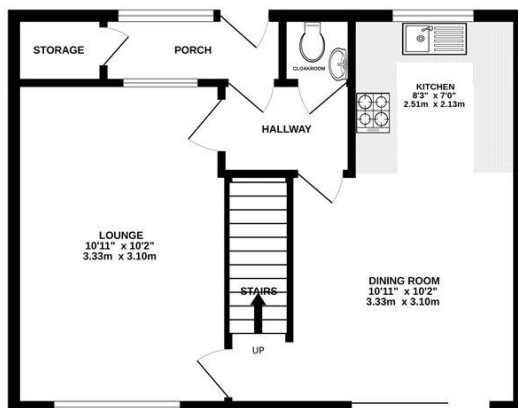
Offered to the market, with no onward chain, is this three bedroom end-of-terrace home located in the popular area of Popley. The ground floor comprises a welcoming porch with a spacious storage cupboard, an inner hallway with a downstairs cloakroom, and a spacious lounge/diner, featuring sliding doors that open directly onto the rear garden. The lounge measures an impressive 16'2", providing a comfortable and versatile living space. Upstairs, the property offers three well-proportioned bedrooms and a generous shower room. There is also a substantially sized cupboard, of which is currently used as a laundry room, adding valuable practical storage.

Outside

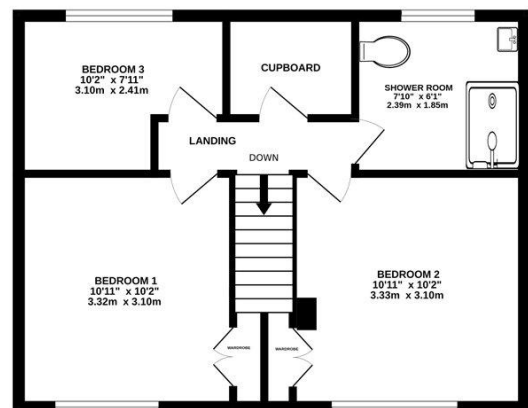
Outside, the property benefits from a small front garden, enclosed by a charming picket fence. The rear garden is mainly laid to lawn with a pathway leading to the rear gate, and it is fully enclosed by panel fencing, making it ideal for families and pets.

Floorplan

GROUND FLOOR



1ST FLOOR



Whilst every attempt has been made to ensure the accuracy of the floorplan contained here, measurements of doors, windows, rooms and any other items are approximate and no responsibility is taken for any error, omission or mis-statement. This plan is for illustrative purposes only and should be used as such by any prospective purchaser. The services, systems and appliances shown have not been tested and no guarantee as to their operability or efficiency can be given.
Made with Metropix ©2026



TO ARRANGE A VIEWING PLEASE CONTACT:
Tel: **01256 880001** or Email: **info@bridges.co.uk**



Important Notice - These particulars are set out as a general outline only for the guidance of intended purchasers/tenants and do not form part of any offer or contract and must not be relied upon as statements or representations of fact. Purchasers/Tenants must satisfy themselves by inspection or otherwise as to their correctness.