



## Three Bedroom End of Terrace House Ramsden Close, Wellesley, Aldershot, Hampshire, GU11 4BX

Price: £485,000

- Three / Four Bedrooms
- Downstairs Cloakroom
- Stunning Family Home
- Versatile Family Living Options
- Driveway and Garage
- Established Garden
- Remainder of NHBC Warranty
- EPC: B (85)



## Description

Wellesley is an exciting development in Rushmoor, located in a beautiful part of North East Hampshire, within easy reach to both the countryside and London. Upon entering the property, you are greeted by a light and airy entrance hall with stylish flooring throughout. The integrated kitchen is high gloss with bespoke tiling, leading to a generously sized dining area or family room - as well as patio doors opening onto the landscaped rear garden. The first floor accommodation offers a principal bedroom with an en suite, an additional reception room or fourth bedroom. The second floor boasts a further two double bedrooms with a further family bathroom. This property further benefits from a downstairs cloakroom, a study, driveway parking for multiple vehicles and a garage. Bridges are delighted to offer this fabulous family home to the market and highly recommend viewing. This home features a secluded, established rear garden, along with driveway parking and a garage.

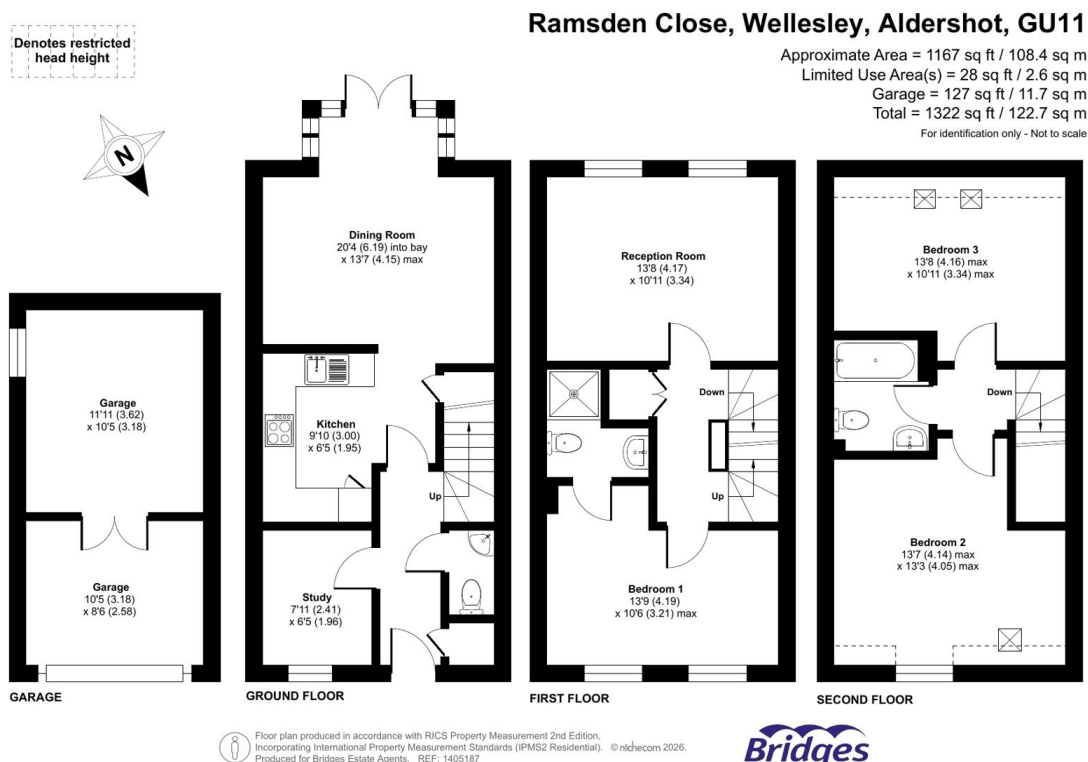
## Outside

Situated on a generously sized plot, this home benefits from driveway parking to the side and a garage, both directly accessible from the back of the property.

The property also enjoys an attractive, secluded rear garden incorporating an area of laid lawn and a patio perfect for entertaining. The garden is enclosed by wooden fencing.

To view the Material Information Certificate for this property please click [Here](#) or contact us to request a copy.

## Floorplan



**TO ARRANGE A VIEWING PLEASE CONTACT:**  
 Tel: **01252 361550** or Email: **info@bridges.co.uk**



Important Notice - These particulars are set out as a general outline only for the guidance of intended purchasers/tenants and do not form part of any offer or contract and must not be relied upon as statements or representations of fact. Purchasers/Tenants must satisfy themselves by inspection or otherwise as to their correctness.