



## Three Bedroom House

**Avon Close, Farnborough, Hampshire, GU14 9LN**

Guide Price: £375,000

- Three Bedrooms
- End of Terrace
- Driveway Parking
- Downstairs Cloakroom
- Integral Garage
- Practical Layout
- Ideal Family Home
- EPC: TBC





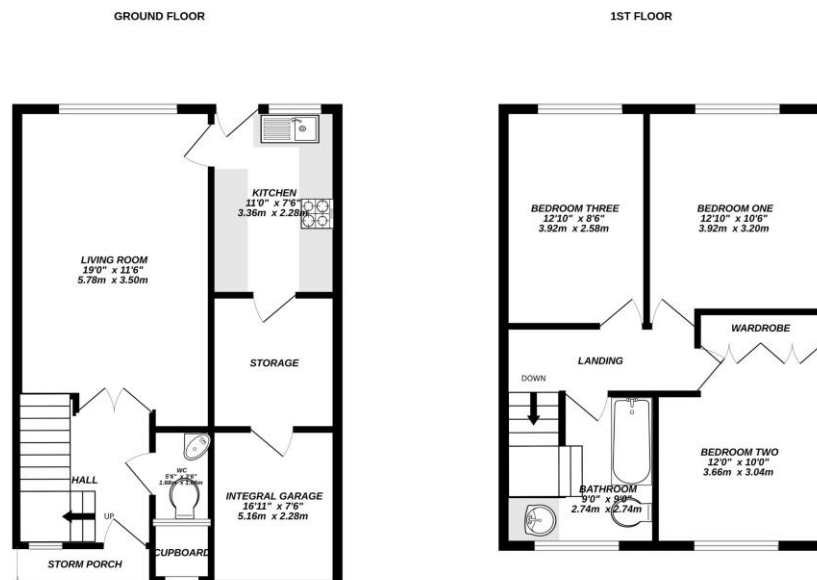
## Description

This well presented three bedroom end of terrace home offers spacious and practical living accommodation, ideal for families or professionals. The property features three generously sized double bedrooms, providing flexible space for bedrooms, home offices or guest rooms. A convenient downstairs cloakroom adds to the home's everyday practicality, while the integral garage offers secure parking or additional storage. The layout is designed to maximise comfort and functionality throughout.

## Outside

Externally, the property benefits from driveway parking for multiple vehicles, ensuring ease and convenience for residents and visitors alike. As an end of terrace home, it enjoys a greater sense of privacy and additional outdoor space compared to mid terrace properties. The integral garage is easily accessible and enhances both storage options and parking flexibility.

## Floorplan



AVON CLOSE

Bridges  
Made with Metropix ©2025



TO ARRANGE A VIEWING PLEASE CONTACT:  
Tel: **01252 361550** or Email: **info@bridges.co.uk**



Important Notice - These particulars are set out as a general outline only for the guidance of intended purchasers/tenants and do not form part of any offer or contract and must not be relied upon as statements or representations of fact. Purchasers/Tenants must satisfy themselves by inspection or otherwise as to their correctness.