



Three Bedroom Semi-Detached House

Knightwood Close, Farnborough, GU14 6HS

£2,000 per month

- Three Bedroom Semi-Detached House
- Living/Dining Room
- Kitchen with Appliances
- Bathroom
- Local Amenities Nearby
- Ideal for Professionals
- Popular Area
- EPC: C (76)



Description

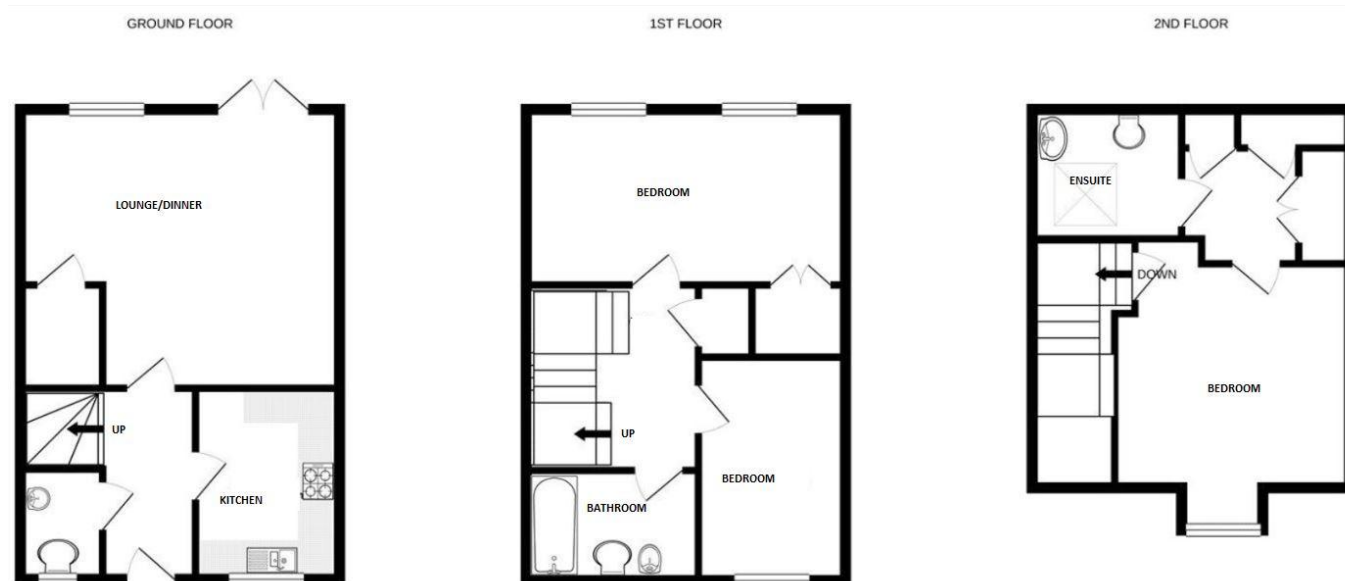
Available Late January (Unfurnished) - This three-bedroom semi-detached house is ideal for professionals and is situated in a popular area. The accommodation includes: living/dining room, kitchen with appliances, plus bathroom.

Outside

Outside there are two allocated parking spaces and local amenities nearby.

To view the Material Information Certificate for this property please click [Here](#) or contact us to request a copy.

Floorplan



Whilst every attempt has been made to ensure the accuracy of the floorplan contained here, measurements of doors, windows, rooms and any other items are approximate and no responsibility is taken for any error, omission or mis-statement. This plan is for illustrative purposes only and should be used as such by any prospective purchaser. The services, systems and appliances shown have not been tested and no guarantee as to their operability or efficiency can be given.
Made with Metropix ©2021



TO ARRANGE A VIEWING PLEASE CONTACT:
Tel: **01252 359887** or Email: **lettings@bridges.co.uk**



Important Notice - These particulars are set out as a general outline only for the guidance of intended purchasers/tenants and do not form part of any offer or contract and must not be relied upon as statements or representations of fact. Purchasers/Tenants must satisfy themselves by inspection or otherwise as to their correctness.