

## Two Bedroom End of Terrace House

**Pinewood Green, Hartland Village, Fleet, Hampshire, GU51 3JU**

**£1,800 per month**

- Two Bedroom End of Terrace House
- Open Plan Living
- Kitchen with Siemens Appliances
- Modern Bathroom and Guest WC
- Underfloor Heating
- Energy & Water efficient
- EV Vehicle Charging Point
- EPC: B (82)



## Description

Available Now (Unfurnished) - This brand new two-bedroom, end-of-terrace house offers light-filled living spaces and a well-considered layout over two floors. The property is located within Pinewood Green, a new development of homes in Hartland Village, Fleet in Hampshire. The accommodation consists of a welcoming hallway that leads to a guest cloakroom, and a spacious open-plan kitchen with integrated Siemens appliances. The adjoining living/dining area opens through French doors to a private, enclosed rear garden, laid to patio and lawn. Upstairs, two generously sized double bedrooms are complemented by a contemporary family bathroom, making this home ideal for professionals seeking style, comfort, and practicality. The house is part of a new phase of homes at Hartland Village and is designed to use less energy than a standard home with enhanced levels of thermal insulation and underfloor heating. The development is adjacent to a 70-acre country park with pathways, ponds, bike tracks and trails. The town of Fleet is 1.5 miles away and has excellent local amenities, including a fast train to London Waterloo in just 36 minutes.

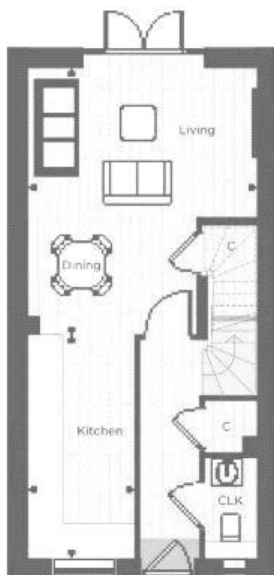
## Outside

The property also benefits from two allocated parking spaces, an electric vehicle charging point and bicycle storage. Hartland Village also offers a shuttle bus service in the mornings and evenings, transporting residents to and from the development and Farnborough station. The service is available Monday - Friday, excluding Bank Holidays.

**\*\*Please note the photography is from the show-home - This property is unfurnished\*\***

To view the Material Information Certificate for this property please click [Here](#) or contact us to request a copy.

## Floorplan



**TO ARRANGE A VIEWING PLEASE CONTACT:**

**Tel: 01252 359887 or Email: [lettings@bridges.co.uk](mailto:lettings@bridges.co.uk)**



**Important Notice - These particulars are set out as a general outline only for the guidance of intended purchasers/tenants and do not form part of any offer or contract and must not be relied upon as statements or representations of fact. Purchasers/Tenants must satisfy themselves by inspection or otherwise as to their correctness.**