

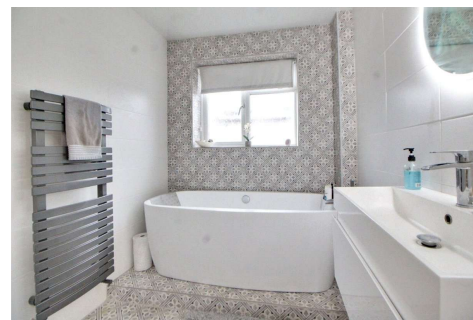


## Four Bedroom Detached House

**Newfield Road, Ash Vale, GU12 5LG**

£3,500 per month

- Four Bedroom Bungalow
- Available Now
- Two Reception Rooms
- Kitchen/Dining Room
- Bathroom and Cloakroom
- Private Garden and Driveway
- Perfect Family Home
- EPC: TBC



## Description

Available Now (Unfurnished) - This four bedroom bungalow is the perfect family home and is situated close to the train station, with links to London Waterloo.

The accommodation includes: two reception rooms, kitchen/dining room, plus bathroom and cloakroom. Outside there is a private garden and driveway. To speed up the reservation process, we recommend you attend all viewings with your original right to rent documents; photo ID (passport) plus a proof of address (e.g. drivers license/utility bill/bank statement dated within the last three months). SECURITY DEPOSIT: £4,038.40.

## Outside

Outside there is a private garden and driveway.

## Floorplan



TO ARRANGE A VIEWING PLEASE CONTACT:

Tel: **01252 361555** or Email: **lettings@bridges.co.uk**



Important Notice - These particulars are set out as a general outline only for the guidance of intended purchasers/tenants and do not form part of any offer or contract and must not be relied upon as statements or representations of fact. Purchasers/Tenants must satisfy themselves by inspection or otherwise as to their correctness.