



## Four Bedroom Semi-Detached House

Shilling Close, GU51 3TP

£2,750 per month

- Four Bedroom Semi-Detached House
- Available Early September
- Living/Dining Room
- Kitchen with Appliances
- En Suite and Cloakroom
- Private Garden
- Perfect Family Home
- EPC : B (85)



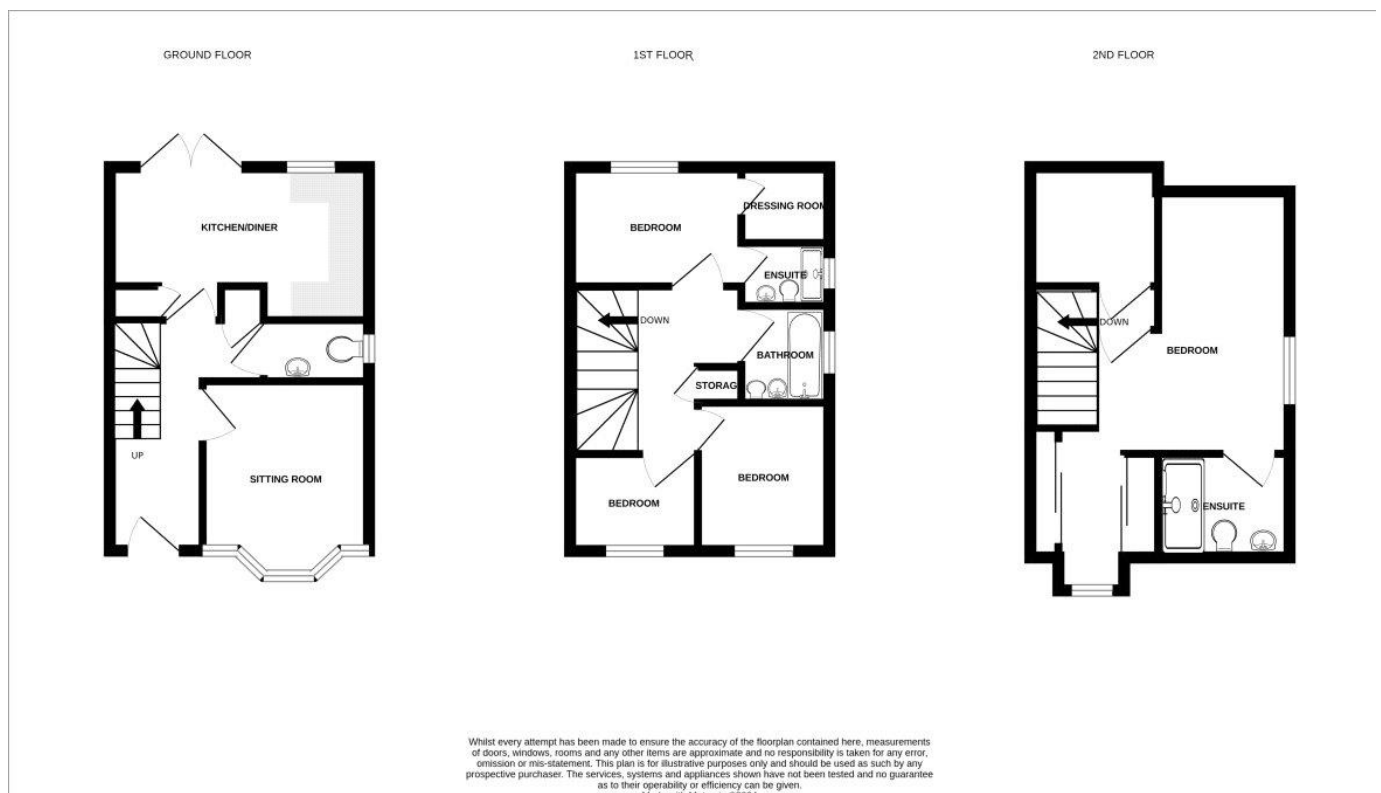
## Description

Available Early September (Furnished) \*VIDEO TOUR ONLINE\* This four bedroom semi-detached house is the perfect family home and is situated within a desirable area. The accommodation includes: living/dining room, kitchen with appliances, bathroom, an en suite and a cloakroom. Pets will be considered by the landlord when you submit an offer for the property (subject to an additional £50pcm). To speed up the reservation process, we recommend you attend all viewings with your original right to rent documents; photo ID (passport) plus a proof of address (e.g. drivers license/utility bill/bank statement dated within the last three months). SECURITY DEPOSIT: £3,173.00

## Outside

Outside there is a garden and allocated parking for multiple vehicles.

## Floorplan



TO ARRANGE A VIEWING PLEASE CONTACT:  
Tel: or Email: [lettings@bridges.co.uk](mailto:lettings@bridges.co.uk)



Important Notice - These particulars are set out as a general outline only for the guidance of intended purchasers/tenants and do not form part of any offer or contract and must not be relied upon as statements or representations of fact. Purchasers/Tenants must satisfy themselves by inspection or otherwise as to their correctness.