



## Three Bedroom End of Terrace House

**Richmond Close, Farnborough, Hampshire, GU14 0RH**

**£1,750 per month**

- Three Bedroom End of Terrace House
- Living/Dining Room
- Kitchen
- Bathroom and En Suite
- Garden, Driveway and Garage
- Perfect Family Home
- Desirable Area
- EPC: D (68)





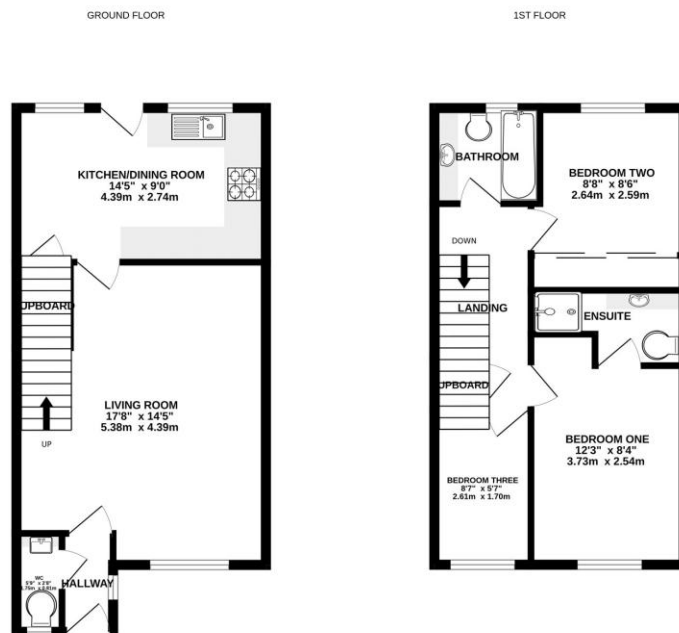
## Description

Available Late April (Furnished / Unfurnished) - This three bedroom end of terrace house is the perfect family home and is situated within a desirable area. The accommodation includes: living/dining room, kitchen, plus bathroom and en suite.

## Outside

Outside there is a garden, driveway and garage.

## Floorplan



Whilst every attempt has been made to ensure the accuracy of the floorplan contained here, measurements of doors, windows, stairs and any other items are approximate and no responsibility is taken for any error, omission or mis-statement. This plan is for illustrative purposes only and should be used as such by any prospective purchaser. The services, fixtures and appliances shown here are for information only and no guarantee as to their quantity or efficiency can be given. Made with Metaphor (2022)



TO ARRANGE A VIEWING PLEASE CONTACT:  
Tel: **01252 359887** or Email: **lettings@bridges.co.uk**



Important Notice - These particulars are set out as a general outline only for the guidance of intended purchasers/tenants and do not form part of any offer or contract and must not be relied upon as statements or representations of fact. Purchasers/Tenants must satisfy themselves by inspection or otherwise as to their correctness.