



Two Bedroom Ground Floor Apartment

West Heath Road, Farnborough, Hampshire, GU14 8QY

£1,400 per month

- Two Bedroom Maisonette
- Living/Dining Room
- Kitchen
- Bathroom
- Garden, Driveway and Garage
- Hidden Gem
- Desirable Area
- EPC: D (68)



Description

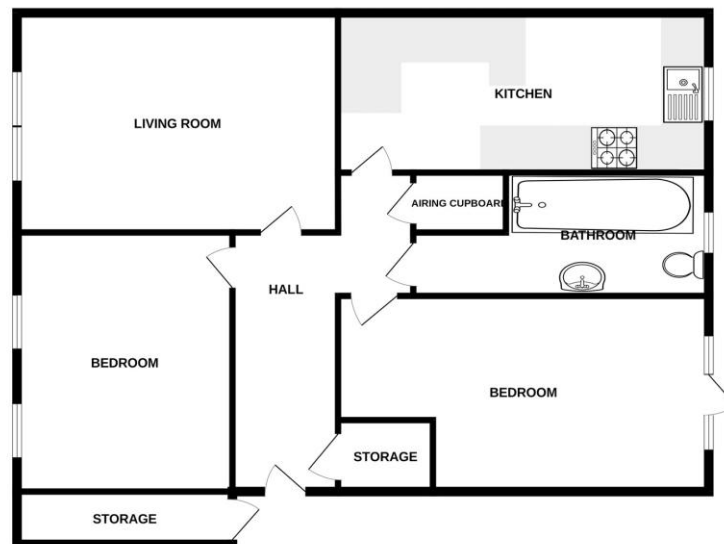
Available Early June (Unfurnished) - This two bedroom maisonette is a hidden gem and is situated within a desirable area. The accommodation includes: living/dining room, kitchen, plus a bathroom.

Outside

Outside there is a garden, driveway, and a garage.

Floorplan

GROUND FLOOR



Whilst every attempt has been made to ensure the accuracy of the floorplan contained herein, measurements of doors, windows, stairs and any other details are approximate and no responsibility is taken for any error, omission or misstatement. This plan is for illustrative purposes only and should be used as such by any prospective purchaser. The services, systems and appliances shown have not been tested and no guarantee as to their operability or efficiency can be given. Made with Metagame iCAD



TO ARRANGE A VIEWING PLEASE CONTACT:
Tel: **01252 359887** or Email: **lettings@bridges.co.uk**



Important Notice - These particulars are set out as a general outline only for the guidance of intended purchasers/tenants and do not form part of any offer or contract and must not be relied upon as statements or representations of fact. Purchasers/Tenants must satisfy themselves by inspection or otherwise as to their correctness.