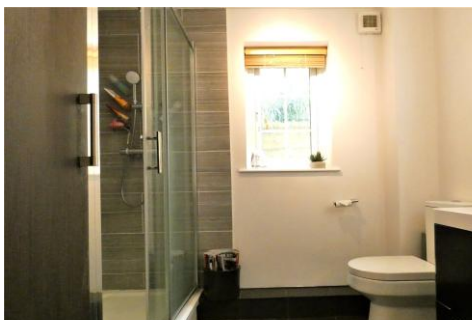


One Double Bedroom Ground Floor Apartment

Monarch Close, Basingstoke, RG22 4XA

£1,150 per month

- One Double Bedroom Apartment
- Living Room
- Kitchen with Appliances
- Bathroom
- Private Garden
- Well Presented Throughout
- Desirable Area
- EPC: C (73)



Description

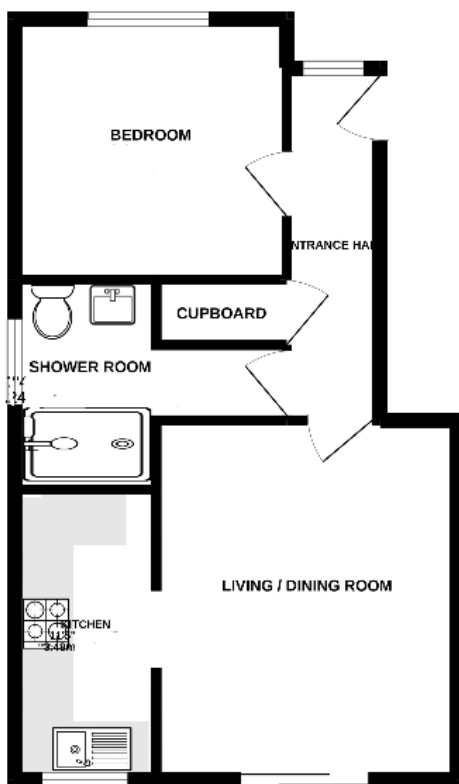
Available Mid February (Unfurnished) - LET PRIOR TO MARKETING. This one double bedroom apartment is presented in excellent decorative order and is situated within a desirable area. The accommodation includes: living room, kitchen with appliances, plus bathroom.

Outside

Outside there is a private garden.

To view the Material Information Certificate for this property please click [Here](#) or contact us to request a copy.

Floorplan



TO ARRANGE A VIEWING PLEASE CONTACT:

Tel: **01256 880011** or Email: **lettings@bridges.co.uk**



Important Notice - These particulars are set out as a general outline only for the guidance of intended purchasers/tenants and do not form part of any offer or contract and must not be relied upon as statements or representations of fact. Purchasers/Tenants must satisfy themselves by inspection or otherwise as to their correctness.