



One Bedroom Terraced House

Northcote Road, Ash Vale, Aldershot, Surrey, GU12 5LX

£1,200 per month

- One Double Bedroom House
- Available Early March
- Popular Residential Location
- Close to Ash Vale Train Station
- Close to Local Amenities
- Excellent Condition Throughout
- Private Garden
- EPC: D (63)



Description

BRIDGES - Available Early March. (Unfurnished)

This one double bedroom terraced house is situated on the ever popular Avondale development in Ash Vale, is in good condition throughout. The property is a few minutes walk from two mainline train stations: Ash Vale (direct to London) and North Camp (Guildford, Gatwick and Reading). The property features a large double bedroom with built in wardrobes, bathroom, a light and airy lounge/diner and a kitchen with appliances.

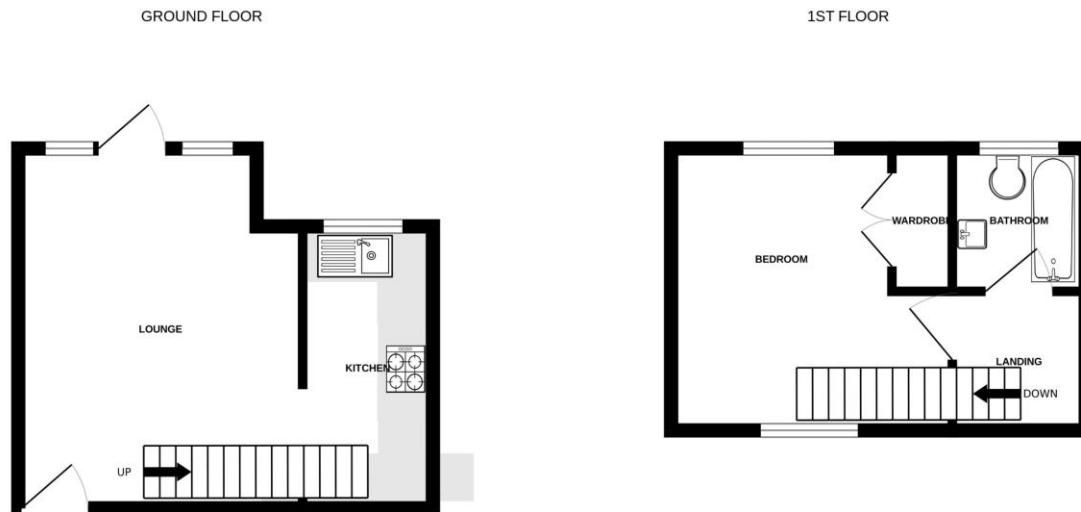
Outside

Outside offers a rear private garden which is recently landscaped. Plus, a mini garage which is accessed via the garden which provides ample storage.

Ample parking is available on the development.

To view the Material Information Certificate for this property please click [Here](#) or contact us to request a copy.

Floorplan



ONE BEDROOM HOUSE

Whilst every attempt has been made to ensure the accuracy of the floorplan contained here, measurements of doors, windows, rooms and any other items are approximate and no responsibility is taken for any error, omission or mis-statement. This plan is for illustrative purposes only and should be used as such by any prospective purchaser. The services, systems and appliances shown have not been tested and no guarantee as to their operability or efficiency can be given.
Made with Metropix ©2026



TO ARRANGE A VIEWING PLEASE CONTACT:
Tel: **01252 361555** or Email: **lettings@bridges.co.uk**



Important Notice - These particulars are set out as a general outline only for the guidance of intended purchasers/tenants and do not form part of any offer or contract and must not be relied upon as statements or representations of fact. Purchasers/Tenants must satisfy themselves by inspection or otherwise as to their correctness.