



Six Bedroom Detached House

Cuffelle Close, Chineham, Basingstoke, Hampshire, RG24 8RH

£2,650 per month

- Six Bedroom Detached House
- Available Late December
- One Reception Room
- Kitchen/Dining Room
- Bathroom, En Suite and Cloakroom
- Garden, Driveway and Garage
- Pets Considered (add £50pcm)
- EPC: C (69)



Description

Available Late December (Unfurnished) This six-bedroom detached house is the perfect family home and is situated in a popular area. The accommodation includes: two reception rooms, kitchen/dining room, plus bathroom, en suite and cloakroom.

Pets will be considered by the landlord when you submit an offer for the property (subject to an additional £50pcm).

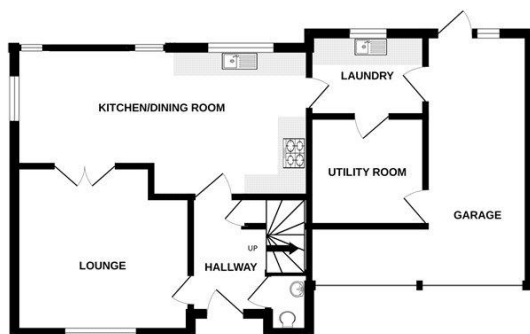
Outside

Outside there is a garden, driveway and a garage.

To view the Material Information Certificate for this property please click [Here](#) or contact us to request a copy.

Floorplan

GROUND FLOOR



1ST FLOOR



Whilst every attempt has been made to ensure the accuracy of the floorplan contained here, measurements of doors, windows, rooms and any other items are approximate and no responsibility is taken for any error, omission or mis-statement. This plan is for illustrative purposes only and should be used as such by any prospective purchaser. The services, systems and appliances shown have not been tested and no guarantee as to their operability or efficiency can be given.
Made with Metropix ©2024



TO ARRANGE A VIEWING PLEASE CONTACT:
Tel: **01256 880011** or Email: **lettings@bridges.co.uk**



Important Notice - These particulars are set out as a general outline only for the guidance of intended purchasers/tenants and do not form part of any offer or contract and must not be relied upon as statements or representations of fact. Purchasers/Tenants must satisfy themselves by inspection or otherwise as to their correctness.