



Six Bedroom Semi-Detached House

Hazel Road, Mytchett, Camberley, Surrey, GU16 6BB

£1,925 per month

- Six Bedroom Semi-Detached House
- Available Now
- Living/Dining Room
- Kitchen with Appliances
- En Suite and Cloakroom
- Garden and Garage
- Well Presented Throughout
- EPC: D (64)



Description

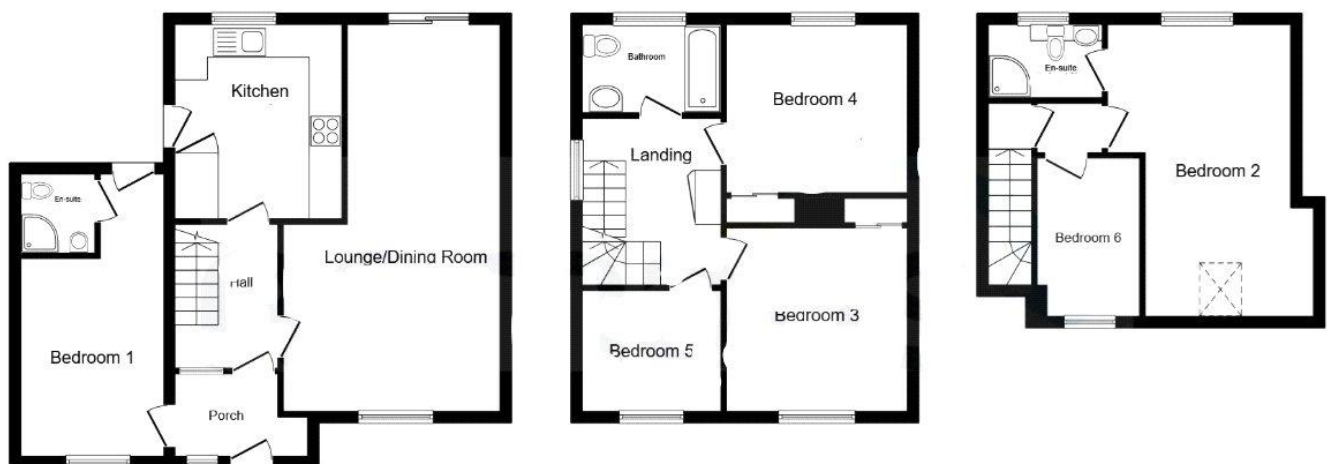
Available Now (Unfurnished) - This six-bedroom semi-detached house is presented in excellent decorative order and is situated in a popular area. The accommodation includes: living/dining room, kitchen with appliances, plus bathroom, en suite and cloakroom.

Outside

Outside there is a garden and a garage.

To view the Material Information Certificate for this property please click [Here](#) or contact us to request a copy.

Floorplan



TO ARRANGE A VIEWING PLEASE CONTACT:
Tel: **01276 588100** or Email: **lettings@bridges.co.uk**



Important Notice - These particulars are set out as a general outline only for the guidance of intended purchasers/tenants and do not form part of any offer or contract and must not be relied upon as statements or representations of fact. Purchasers/Tenants must satisfy themselves by inspection or otherwise as to their correctness.