

Three Bedroom Semi-Detached House

Lower Newport Road, Aldershot, Hampshire, GU12 4QD

£1,600 per month

- Available Late December (Unfurnished)
- Three Bedroom Semi-Detached House
- Two Reception Rooms
- Kitchen/Dining Room
- Bathroom and Cloakroom
- Private Garden
- Driveway Parking
- EPC Rating: D (66)



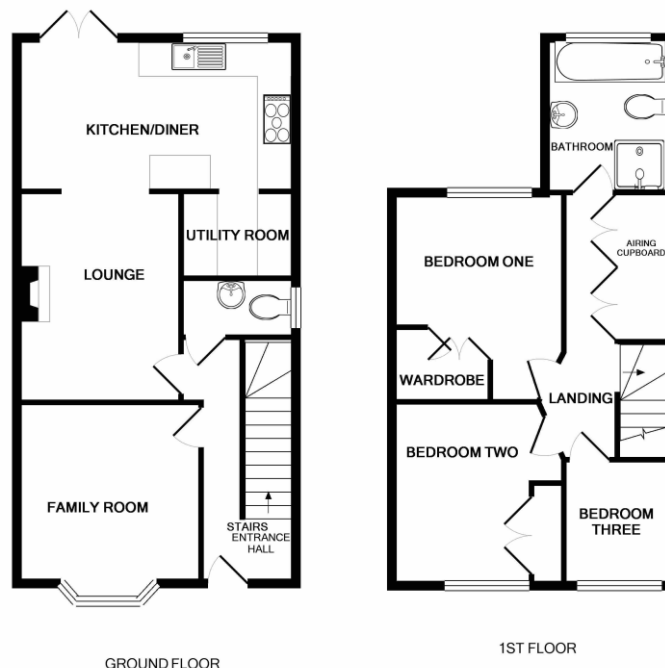
Description

BRIDGES - Available Late December (Unfurnished) * No Tenant Set Up Fee * This three bedroom semi-detached house is presented in good decorative order and is close to both the town centre and train station to London Waterloo. Additionally, the accommodation includes two reception rooms, kitchen/dining room plus a bathroom and cloakroom. Pets Considered.

Outside

Outside there is a private garden plus driveway parking.

Floorplan



Whilst every attempt has been made to ensure the accuracy of the floor plan contained here, measurements of doors, windows, rooms and any other items are approximate and no responsibility is taken for any error, omission, or mis-statement. This plan is for illustrative purposes only and should be used as such by any prospective purchaser. The services, systems and appliances shown have not been tested and no guarantee as to their operability or efficiency can be given.
Made with Metropix ©2019



TO ARRANGE A VIEWING PLEASE CONTACT:
Tel: **01252 361555** or Email: **lettings@bridges.co.uk**



Important Notice - These particulars are set out as a general outline only for the guidance of intended purchasers/tenants and do not form part of any offer or contract and must not be relied upon as statements or representations of fact. Purchasers/Tenants must satisfy themselves by inspection or otherwise as to their correctness.