

## Two Bedroom Apartment

**Winterthur Way, Basingstoke, Hampshire, RG21 7UG**

**£1,350 per month**

- Two Bedroom Apartment
- Available Mid February
- Living Room
- Open Plan Kitchen
- Bathroom and En Suite
- Allocated Parking
- Close to the Train Station
- EPC: B (86)



## Description

Available Mid February (Unfurnished) - This two-bedroom apartment is presented in excellent decorative order and is close to the train station with links to London Waterloo. The accommodation includes: living room, open plan kitchen, plus bathroom and en suite.

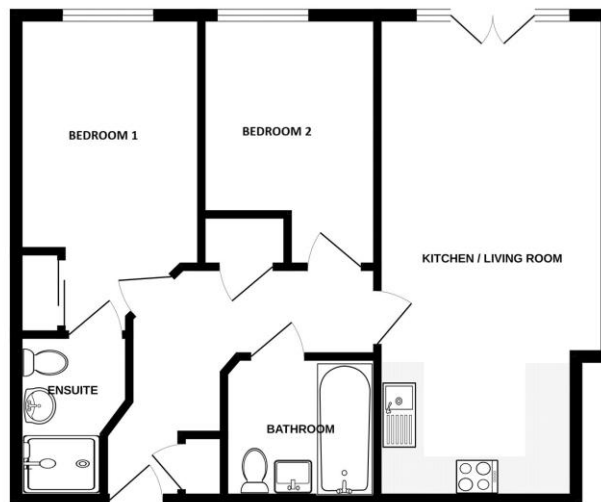
## Outside

Outside there is allocated parking.

To view the Material Information Certificate for this property please click [Here](#) or contact us to request a copy.

## Floorplan

EIGHTH FLOOR



Whilst every attempt has been made to ensure the accuracy of the floorplan contained herein, measurements of doors, windows, rooms and any other items are approximate and no responsibility is taken for any error, omission or mis-statement. This plan is for guidance purposes only and should be used in conjunction with any prospective purchase. The services, appliances and fixtures shown have not been tested and no guarantee as to their operability or efficiency can be given.  
Made with MyHomeplan ©2020



**TO ARRANGE A VIEWING PLEASE CONTACT:**  
Tel: **01256 880011** or Email: **lettings@bridges.co.uk**



**Important Notice** - These particulars are set out as a general outline only for the guidance of intended purchasers/tenants and do not form part of any offer or contract and must not be relied upon as statements or representations of fact. Purchasers/Tenants must satisfy themselves by inspection or otherwise as to their correctness.