



Two Bedroom Apartment

Rye Close, Fleet, Hampshire, GU51 2AJ

£1,500 per month

- Two Bedroom Apartment
- Living/Dining Room
- Kitchen with Appliances
- Bathroom and En Suite
- Allocated Parking
- Ideal for Professionals
- Popular Area
- EPC: C (72)



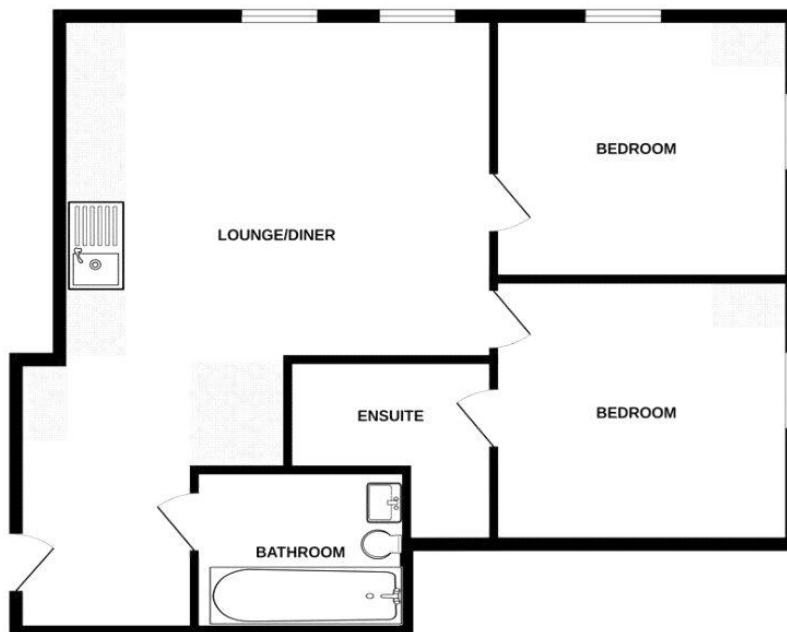
Description

Available Late September (Unfurnished) - This two-bedroom apartment is ideal for professionals and is situated within a desirable area. The accommodation includes; living/dining room, kitchen with appliances, plus a bathroom.

Outside

Outside there is allocated parking.

Floorplan



Whilst every attempt has been made to ensure the accuracy of the floorplan contained herein, measurements of doors, windows, rooms and any other items are approximate and no responsibility is taken for any error, omission or mis-statement. This plan is for illustrative purposes only and should be used as such by any prospective purchaser. The services, systems and appliances shown have not been tested and no guarantee as to their operability or efficiency can be given.
Made with Metropix ©2024



TO ARRANGE A VIEWING PLEASE CONTACT:
Tel: **01252 359887** or Email: **lettings@bridges.co.uk**



Important Notice - These particulars are set out as a general outline only for the guidance of intended purchasers/tenants and do not form part of any offer or contract and must not be relied upon as statements or representations of fact. Purchasers/Tenants must satisfy themselves by inspection or otherwise as to their correctness.