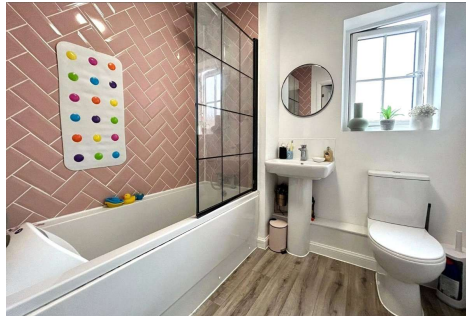


## Two Bedroom Apartment

**Charteris Close, Wellesley, Aldershot, Hampshire, GU11 4DZ**

**£1,450 per month**

- Two Bedroom Apartment
- Available Mid May
- Living/Dining Room
- Kitchen with Appliances
- Bathroom and En Suite
- Well Presented Throughout
- Allocated Parking
- EPC: C (69)



## Description

Available Early May (Unfurnished) - This two bedroom apartment is presented in excellent decorative order and is situated within a desirable area. The accommodation includes: living/dining room, kitchen with appliances, plus bathroom and en suite.

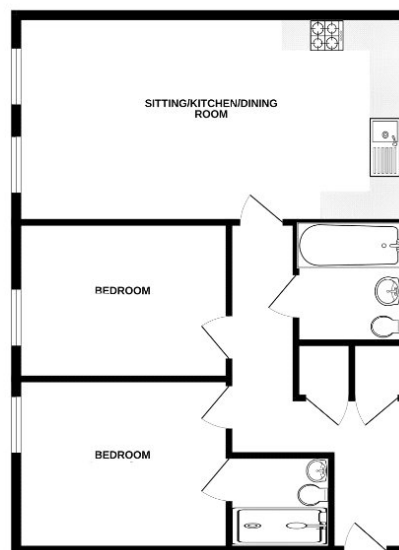
Pets will be considered by the landlord when you submit an offer for the property. To speed up the reservation process, we recommend you attend all viewings with your original right to rent documents; photo ID (passport) plus a proof of address (e.g. drivers license/utility bill/bank statement dated within the last three months). SECURITY DEPOSIT: £1,673.00.

## Outside

Outside there is allocated parking.

## Floorplan

SECOND FLOOR



BRIDGES PROPERTY MANAGEMENT LTD. DOES NOT TAKE ANY RESPONSIBILITY FOR THE ACCURACY OF THE FLOORPLAN. MEASUREMENTS OF ROOMS, WINDOWS, CORNERS AND ANY OTHER DETAILS ARE APPROXIMATE AND NO RESPONSIBILITY IS TAKEN FOR ANY ROOM MEASUREMENTS OR THE FLOORPLAN. THIS PLAN IS FOR GUIDANCE PURPOSES ONLY AND SHOULD BE USED AS A GUIDE TO THE PROPOSED PARTITION. THE SERVICES, LAYOUTS AND APPLIANCES SHOWN HAVE NOT BEEN INSPECTED AND NO GUARANTEE IS GIVEN FOR THE ACCURACY OF THE FLOORPLAN.



TO ARRANGE A VIEWING PLEASE CONTACT:

Tel: **01252 361555** or Email: **lettings@bridges.co.uk**



Important Notice - These particulars are set out as a general outline only for the guidance of intended purchasers/tenants and do not form part of any offer or contract and must not be relied upon as statements or representations of fact. Purchasers/Tenants must satisfy themselves by inspection or otherwise as to their correctness.