



Two Bedroom Apartment

Providence House, Bartley Way, Hook, RG27 9FG

£1,400 per month

- Two Bedroom Apartment
- Available Late March
- Living Room
- Kitchen with Appliances
- Bathroom
- Communal Grounds and Parking
- Recently Refurbished
- EPC: D (61)



Description

Available Late March (Unfurnished) - This two bedroom apartment has been recently refurbished and is close to the train station with links to London Waterloo. The accommodation includes: living room, kitchen with appliances, plus bathroom.

Outside

Outside there are communal grounds and parking.

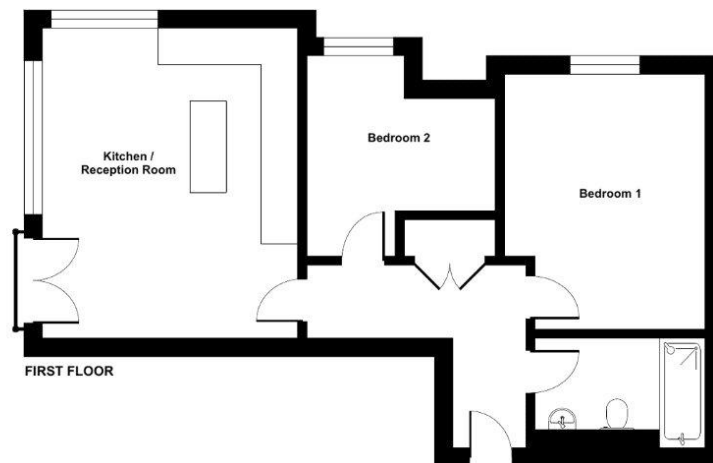
Floorplan



Providence House Bartley Way, Hook, Hampshire, RG27

Approximate Area = 643 sq ft / 59.7 sq m

For identification only - Not to scale



Floor plan produced in accordance with RICS Property Measurement Standards incorporating International Property Measurement Standards (IPMS2 Residential). © rldhcom 2024. Produced for Bridges Estate Agents. REF: 1190458



TO ARRANGE A VIEWING PLEASE CONTACT:
 Tel: **01256 769998** or Email: **lettings@bridges.co.uk**



Important Notice - These particulars are set out as a general outline only for the guidance of intended purchasers/tenants and do not form part of any offer or contract and must not be relied upon as statements or representations of fact. Purchasers/Tenants must satisfy themselves by inspection or otherwise as to their correctness.