

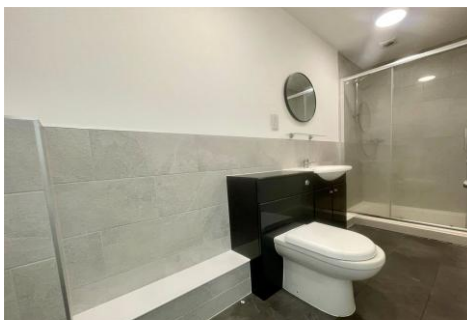


## Two Bedroom End of Terrace House

**New Road, Basingstoke, Hampshire, RG21 7PW**

**£1,400 per month**

- Two-bedroom End of Terrace House
- Available Now
- Living Room
- Kitchen with Appliances
- Local Amenities Nearby
- Ideal for Professionals
- Close to the Town Centre
- EPC: D (58)



## Description

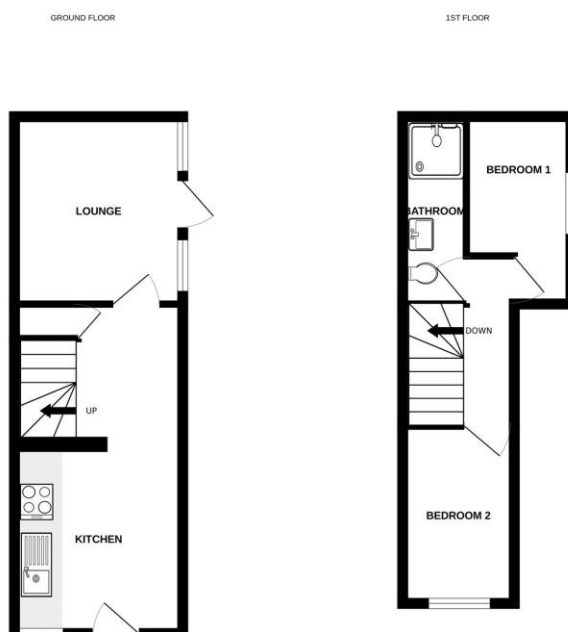
Available Now (Unfurnished) - This two-bedroom end of terrace house is ideal for professionals and is close to the town centre. The accommodation includes living room, kitchen with appliances, plus bathroom.

## Outside

Outside there are local amenities nearby.

To view the Material Information Certificate for this property please click [Here](#) or contact us to request a copy.

## Floorplan



Whilst every attempt has been made to ensure the accuracy of the floorplan contained herein, measurements of doors, windows, rooms and any other items are approximate and no responsibility is taken for any error, omission or misstatement. This plan is for guidance purposes only and should be used in conjunction with the prospective purchaser. The accuracy, reliability and appropriateness of the plan has not been tested and no guarantee as to their accuracy or efficiency can be given. Made with Floorplan 12345



TO ARRANGE A VIEWING PLEASE CONTACT:  
Tel: **01256 880011** or Email: **lettings@bridges.co.uk**



Important Notice - These particulars are set out as a general outline only for the guidance of intended purchasers/tenants and do not form part of any offer or contract and must not be relied upon as statements or representations of fact. Purchasers/Tenants must satisfy themselves by inspection or otherwise as to their correctness.