



## Two Bedroom Semi-Detached House

**Holme Close, Ash, Aldershot, Surrey, GU12 6GY**

**£1,600 per month**

- Two Bedroom Semi-Detached House
- Available Early August
- Living/Dining Room
- En Suite and Cloakroom
- Kitchen with Appliances
- Private Garden and Driveway
- Well Presented Throughout
- EPC : B (83)



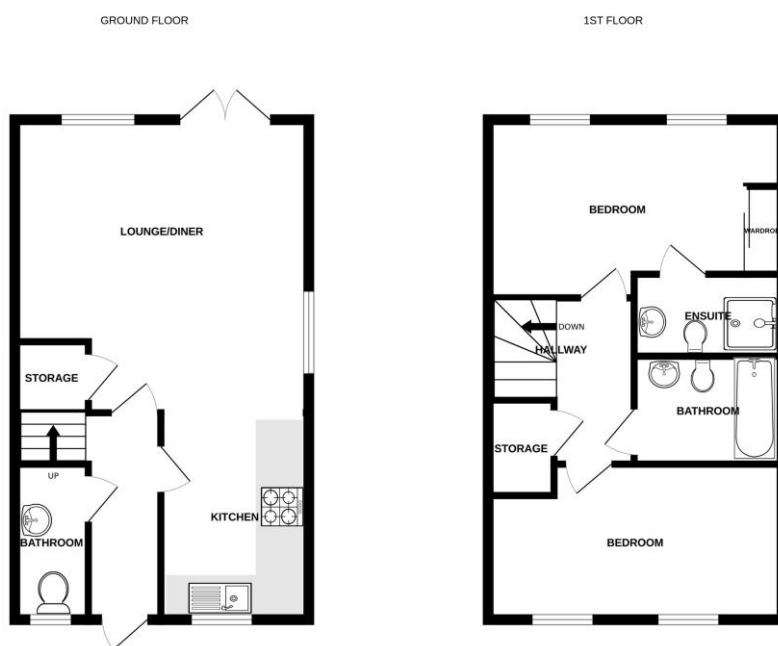
## Description

Available Early August Furnished/Unfurnished is this two bedroom semi-detached house that is presented in excellent decorative order and is situated within a desirable area. The accommodation includes a living/dining room, a kitchen with appliances, plus bathroom, en suite and a cloakroom.

## Outside

Outside, there is a private garden and driveway.

## Floorplan



Whilst every attempt has been made to ensure the accuracy of the floorplan contained here, measurements of floors, windows, rooms and any other items are approximate and no responsibility is taken for any error, omission or mis-statement. This plan is for illustrative purposes only and should be used as such by any prospective purchaser. The services, systems and appliances shown have not been tested and no guarantee as to their operability or efficiency can be given.  
Made with Metropix 6/2023



TO ARRANGE A VIEWING PLEASE CONTACT:  
Tel: **01252 361555** or Email: **lettings@bridges.co.uk**



Important Notice - These particulars are set out as a general outline only for the guidance of intended purchasers/tenants and do not form part of any offer or contract and must not be relied upon as statements or representations of fact. Purchasers/Tenants must satisfy themselves by inspection or otherwise as to their correctness.