

## Four Bedroom Detached House

**Whitby Close, Farnborough, GU14 6TR**

£2,400 per month

- Four Bedroom Detached House
- Three Reception Rooms
- Kitchen/Dining Room
- Bathroom and En Suite
- Garden, Driveway and Garage
- Well Presented Throughout
- Close to the Train Station
- EPC: C (70)



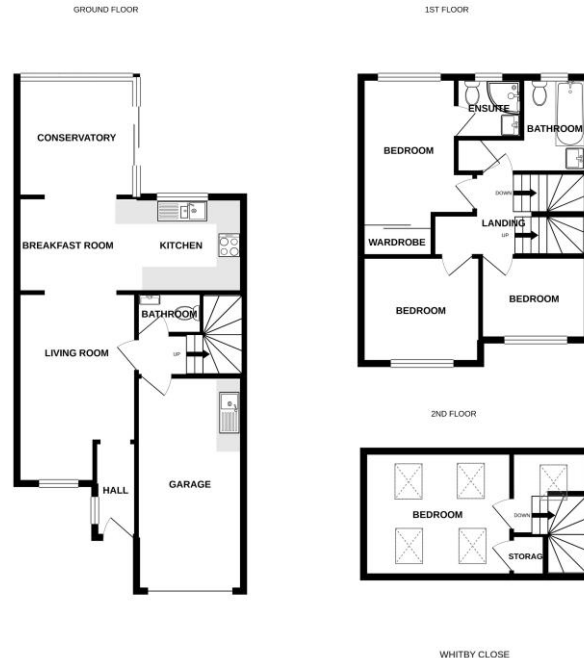
## Description

Available Late September (Unfurnished) - This four bedroom detached house is presented in excellent decorative order and is close to the train station with links to London Waterloo. The accommodation includes: three reception rooms, kitchen/dining room, plus a bathroom and en suite.

## Outside

Outside there is garden, driveway and a garage.

## Floorplan



Whilst every attempt has been made to ensure the accuracy of the floorplan contained here, measurements of doors, windows, rooms and any other items are approximate and no responsibility is taken for any error, omission or mis-statement. This plan is for illustrative purposes only and should be used as such by any prospective purchaser. The services, systems and appliances shown have not been tested and no guarantee as to their operability or efficiency can be given.  
Made with Metropix ©2021



**TO ARRANGE A VIEWING PLEASE CONTACT:**  
Tel: **01252 359887** or Email: **lettings@bridges.co.uk**



**Important Notice** - These particulars are set out as a general outline only for the guidance of intended purchasers/tenants and do not form part of any offer or contract and must not be relied upon as statements or representations of fact. Purchasers/Tenants must satisfy themselves by inspection or otherwise as to their correctness.